



ICY DOCK®

Bringing Innovation & Difference

Product Guide

About Us / OEM Services

Tailored to your product specifications, ICY DOCK offers flexible designs and houses a dedicated product development team to quickly turn your dream into reality.



- 03** About ICY DOCK
- 04** OEM/ODM Solutions

ToughArmor Series

Full-metal, rugged SSD/HDD drive cage built for most demanding environments to safeguard your critical data



- 05** For 3.5" Drive Bay
MB9911K-B , MB991SK-B , MB992SK-B , MB992SKR-B , MB993SK-B , MB491SKL-B , MB492SKL-B , MB601VK-B , MB601VK-1B , MB601M2K-1B MB833M2K-B , MB833MK-B V2 , MB834M2K-B , MB834MK-B V2
- 09** For 5.25" Drive Bay
MB994IPO-3SB , MB994IKO-3SB , MB994SK-1B , MB994SP-4S , MB994SP-4SB-1 , MB602SPO-B , MB604SPO-B , MB606SPO-B , MB607SP-B , MB608SP-B , MB699VP-B , MB699VP-B V2 , MB720M2K-B , MB720MK-B V2 , MB872MP-B , MB873MP-B , MB902SPR-B , MB996SP-6SB , MB996SK-6SB , MB998IP-B , MB998SP-B , MB998SK-B
- 15** For Dual / Triple 5.25" Drive Bay
MB508SP-B , MB516SP-B , MB924IP-B
- 16** External 2.5" SATA Drive Enclosure
MB991U3-1SB
- 16** For Slim ODD Drive Bay
MB411SPO-B , MB411SKO-B , MB411SPO-1B , MB411SPO-2B , MB852SPO-B
- 18** For PCIe Extension Slot
MB839SP-B , MB840M2P-B

ExpressCage Series

State of the art SSD/HDD mobile rack with unique tool-less drive installation tray designed for easy hot swap and quick installation of drives while maintaining the innate protection of a drive tray



- 19** For 3.5" Drive Bay
MB741SP-B , MB742SP-B
- 20** For 5.25" Drive Bay
MB322SP-B , MB324SP-B , MB326SP-B , MB732SPO-B

flexiDOCK Series

Aimed for studio applications, flexiDock SSD/HDD docking stations are built for easy hot swapping between different data drives and individual power buttons for separate workflow control.



- 21** For 3.5" Drive Bay
MB521SP-B , MB522SP-B
- 21** For 5.25" Drive Bay
MB095SP-B , MB795SP-B , MB014SP-B
- 22** For Dual / Triple 5.25" Drive Bay
MB830SP-B
- 22** For Slim ODD Drive Bay
MR511SPO-R . MR511SPO-1R

EZConvert Series

Fully-enclosed, tool-less 2.5" to 3.5" SSD/HDD drive adapter with exact same dimensions and screw hole locations of a 3.5" HDD drive, making them the first choice for adapting 2.5" SSD form factor inside 3.5" HDD desktop PCs, servers and workstations.



23 For Internal 2.5" Drive Bay

MB703M2P-B, MB705M2P-B, MB705MP-B V2

25 For Internal 3.5" Drive Bay

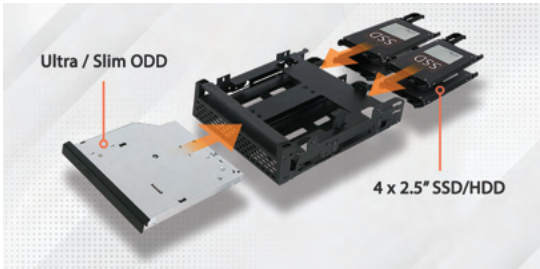
MB382SP-3B, MB482SP-3B, MB882SP-1S-1B, MB882SP-1S-2B
MB882SP-1S-3B, MB982SP-1S, MB982IP-1S-1, MB982SPR-2S R1

26 PCIe Expansion Slot Enclosures

MB987M2P-B, MB987M2P-1B, MB987M2P-2B

Bracket Series

Creating more flexibility and maximizing the space efficiency of a standard device/drive bay by allowing accommodations for multiple drives/devices in a given space.



27 For 3.5" Drive Bay

MB082SP, MB290SP-B, MB610SP, MB082SP-1, MB290SP-1B

28 For 5.25" Drive Bay

MB343SP, MB343SPO, MB344SP, MB344SPO

ICYNano & EZ-Adapter

One of a kind tool-less drive installation NVMe SSD enclosure designed as a tool for media professionals or power users to store, transfer and remove their valuable data while being fully protected by ICY DOCK's 3 year warranty.



29 External M.2 SSD Enclosure

MB809U3-1M2B, MB861U31-1M2B, MB061U-1MB, MB961U-1MB

30 External 2.5" SSD Enclosure

MB931U-1VB, MB031U-1SMB

3.5" HDD Mobile Racks

Made with quality material and unique ID design, ICY DOCK 3.5" HDD/SSD cage offers convenience for users to hot swap or transport drives in and out of the system with ease.



31 For 5.25" Drive Bay

MB171SP-B, MB171SP-1B, MB876SK-B, MB971SP-B, MB971SPO-B

32 For Dual/Triple 5.25" Drive Bays

MB153SP-B, MB901SPR-B, MB155SP-B

Concept Products

Constantly innovating concept products to complement enterprise storage applications based on user experiences & feedbacks.



33 For External 3.5" Drive Bay

CP099, CP100-1, CP100-2, CP091, CP078

34 For 5.25" Drive Bay

CP097, CP093, CP082-1, CP082-2, CP082-3, CP082-4

36 For Dual / Triple 5.25" Drive Bay

CP104, CP092-1, CP092-2, CP054

37 For (Ultra) Slim ODD Drive Bay

CP086, CP085, CP083



ICY DOCK®

Bringing Innovation & Difference

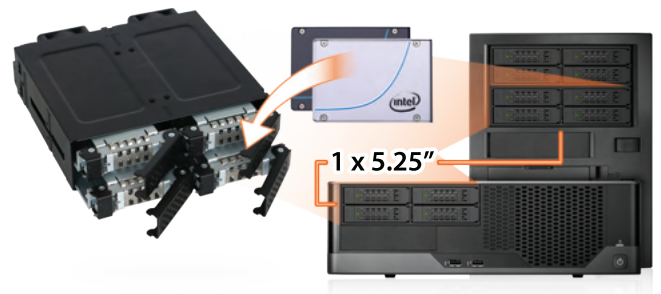


About ICY DOCK:

ICY DOCK is a privately held company with more than 25 years of experience in designing, manufacturing, branding and distributing computer data storage and enclosure peripherals, especially in industrial and rugged computer data storage. We believe our innovations will revolutionize computer data storage by bringing new designs and form factors into the market, providing improvements and convenience in computer data management for small businesses, government, industrial, military, and medical industries.

ICY DOCK became a global leader in the computer data storage industry, utilizing designing and manufacturing capabilities since 1992. Adhering to strict manufacturing guidelines and having creative product designing teams in California, USA, ICY DOCK delivers the highest quality products to exceed customer expectations and offers one of a kind products to satisfy customer's needs.

- 24-year of product design experiences
- Product research & development team located in California, USA.
- Various USA patented products from ICY DOCK's original design.
- Long product lifecycle with average more than ten years.
- Industry leading 3-year warranty for all ICY DOCK products.
- Offer removable drive functionality, hot-swap capabilities, modular design aiming for user convenience in computer data storage field.
- Ability to make revisions to our designs to fit the needs of system integrators, manufacturers, and government.
- Strategically incorporated branch offices throughout the world to provide immediate support to local customers.



In Partnership with:



OEM/ODM Solutions:

Having decades of experience in innovating difference, ICY DOCK is truly an expert in designing and customizing data storage peripherals. From consumer graded to enterprise ranked data storage systems, any level of expertise is not a compromise to us. Since our first establishment in 1992, ICY DOCK has led the industry in designing revolutionary products such as the first SCSI module and the first 2.5" to 3.5" SSD converter. This is why top-tier companies such as GE, HP and Google choose and trust ICY DOCK's product to safeguard their mission-critical data. It is our prime responsibility to provide satisfaction and guarantee to any of your special OEM or ODM requests. On the top of all that, having privately owned factories and a specialized OEM engineering team, ICY DOCK has the ability to allow fast turn-around rate, customized manufacture process and provide top-of-line service to your valuable OEM/ODM requests.



Design and Manufacture

ICY DOCK has its own experienced engineering team designated to provide the best service and solution for your mission critical projects. Also, having 29 years of expertise in the field, ICY DOCK acquired the ability to withstand and accomplish the toughest project and will only bring perfection to meet your request.



Quality Control

ICY DOCK's factory is under the certification of ISO 9001: 2015. All of our products are ensured with highest standard by passing tedious quality assurances and numerous stress tests. Other certification, such as CE, RoHS, UL, ML-STD and more, can also be complied if requested by customer.



Production Facility

ICY DOCK has its owns production facilities for best product regulation and fast production turn around rate.



Global Support

Having offices located worldwide, ICY DOCK can provide pre- and post-sales customer service to our valuable customers anywhere.

For 3.5" Drive Bay

MB991IK-B

1 x 2.5" SATA/SAS HDD/SSD Backplane Mobile Rack



- Fits standard 3.5" drive bay
- Hot-swappable 1 x 2.5" HDD/SSD
- Supports SATA III / SAS 3.0 (dual channel)
- Fits 5-15mm drive height
- Rugged full metal construction
- Safeguard 2-segment key lock system



MB991SK-B

1 x 2.5" SATA/SAS HDD/SSD Backplane Mobile Rack



- Fits standard 3.5" drive bay
- Hot-swappable 1 x 2.5" HDD/SSD
- Supports SATA III / SAS 3.0 (single channel)
- Fits 5-15mm drive height
- Rugged full metal construction
- Safeguard 2-segment key lock system

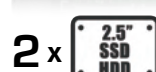


MB992SK-B

2 x 2.5" SATA/SAS HDD/SSD Backplane Mobile Rack



- Fits standard 3.5" drive bay
- Hot-swappable 2 x 2.5" HDD/SSD
- Supports SATA III / SAS 3.0 (single channel)
- Fits 5-9.5mm drive height
- Rugged full metal construction
- Safeguard 2-segment key lock system



MB992SKR-B

2 x 2.5" SATA HDD/SSD Backplane Mobile Rack with RAID 0/1/BIG/JBOD



- Fits standard 3.5" drive bay
- Hot-swappable 2 x 2.5" HDD/SSD
- Supports SATA III
- Fits 5-9.5mm drive height
- Rugged full metal construction
- Safeguard 2-segment key lock system
- Built-in hardware RAID 0/1/BIG/JBOD

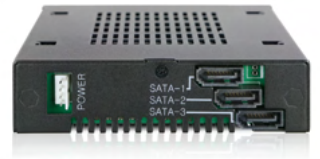


MB993SK-B

3 x 2.5" SATA/SAS HDD/SSD Backplane Mobile Rack



- Fits standard 3.5" drive bay
- Hot-swappable 3 x 2.5" HDD/SSD
- Supports SATA III / SAS 3.0 (single channel)
- Fits 5-7mm drive height
- Rugged full metal construction
- Safeguard 2-segment key lock system



3 x 

MB491SKL-B

1 x 2.5" SATA/SAS HDD/SSD Backplane Mobile Rack with Thumbscrew Design



- Fits standard 3.5" drive bay
- Hot-swappable 1 x 2.5" HDD/SSD
- Supports SATA III / SAS 3.0 (single channel)
- Fits 5-15mm drive height
- Rugged full metal construction
- Key & thumbscrew dual lock system



1 x 

MB492SKL-B

2 x 2.5" SATA/SAS HDD/SSD Backplane Mobile Rack with Thumbscrew Design



- Fits standard 3.5" drive bay
- Hot-swappable 2 x 2.5" HDD/SSD
- Supports SATA III / SAS 3.0 (single channel)
- Fits 5-9.5mm drive height
- Rugged full metal construction
- Key & thumbscrew dual lock system



2 x 

MB601VK-B

1 x 2.5" NVMe U.2/SATA/SAS HDD/SSD Backplane Mobile Rack (147mm Depth)



(PCIe 3.0)

- Fits standard 3.5" drive bay
- Hot-pluggable 1 x 2.5" HDD/SSD
- Supports NVMe 32Gbps / SATA III / SAS 3.0 (single channel)
- Fits 5-15mm drive height
- Rugged full metal construction
- Safeguard 2-segment key lock system



1 x  / 

For 3.5" Drive Bay

MB601VK-1B

1 x 2.5" NVMe U.2/SATA/SAS HDD/SSD Backplane Mobile Rack with U.2 SFF-8639 Connector (168.7mm Depth)



(PCIe 3.0)

- Fits standard 3.5" drive bay
- Hot-pluggable 1 x 2.5" HDD/SSD
- Support NVMe 32Gbps / SATA III / SAS 3.0 (single channel)
- Fits 5-15mm drive height
- Rugged full metal construction
- Safeguard 2-segment key lock system



SFF-8639 Connector

1 x U.2 SSD / 2.5" SSD HDD

MB601M2K-1B

1 x NVMe M.2 SSD Backplane Mobile Rack with U.2 SFF-8639 Connector



(PCIe 3.0)

- Fits standard 3.5" drive bay
- Hot-pluggable 1 x M.2 NVMe PCIe SSD
- Supports NVMe 32Gbps per channel
- Fits 2230 / 2242 / 2260 / 2280 / 22110 M.2 SSD
- Rugged full metal construction
- Safeguard 2-segment key lock system



SFF-8639 Connector

1 x M.2 SSD

MB833M2K-B

1 x NVMe M.2 SSD Backplane Mobile Rack with Mini-SAS HD Connector



(PCIe 3.0)

- Fits standard 3.5" drive bay
- Hot-pluggable 1 x M.2 NVMe PCIe SSD
- Supports NVMe 32Gbps per channel
- Fits 2230 / 2242 / 2260 / 2280 / 22110 M.2 SSD
- Rugged full metal construction
- Safeguard 2-segment key lock system



SFF-8643 Connector

1 x M.2 SSD

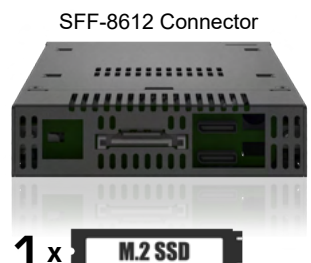
MB833MK-B V2

1 x NVMe M.2 SSD Backplane Mobile Rack with OcuLink Connector



(PCIe 4.0)

- Fits standard 3.5" drive bay
- Hot-pluggable 1 x M.2 NVMe PCIe SSD
- Supports NVMe 64Gbps per channel
- Fits 2230 / 2242 / 2260 / 2280 / 22110 M.2 SSD
- Rugged full metal construction
- Safeguard 2-segment key lock system



SFF-8612 Connector

1 x M.2 SSD

MB834M2K-B

2 x NVMe M.2 SSD Backplane Mobile Rack with Mini-SAS HD Connector



(PCIe 3.0)

- Fits standard 3.5" drive bay
- Hot-pluggable 2 x M.2 NVMe PCIe SSD
- Supports NVMe 32Gbps per channel
- Fits 2230 / 2242 / 2260 / 2280 / 22110 M.2 SSD
- Rugged full metal construction
- Safeguard 2-segment key lock system



SFF-8643 Connector



MB834MK-B V2

2 x NVMe M.2 SSD Backplane Mobile Rack with OCUlink Connector



(PCIe 4.0)

- Fits standard 3.5" drive bay
- Hot-pluggable 2 x M.2 NVMe PCIe SSD
- Supports NVMe 64Gbps per channel
- Fits 2230 / 2242 / 2260 / 2280 / 22110 M.2 SSD
- Rugged full metal construction
- Safeguard 2-segment key lock system



SFF-8612 Connector



Autonomous Driving Test Vehicle



Data Transport



For 5.25" Drive Bay

MB994IPO-3SB

2 x 2.5" SATA/SAS HDD/SSD & Slim ODD Backplane Cage



(Slim ODD not included)

- Fits standard 5.25" drive bay
- Hot-swappable 2 x 2.5" HDD/SSD & 1 x Slim ODD
- Supports SATA III / SAS 3.0 (dual channel)
- Fits 5-15mm drive height
- Rugged full metal construction
- UL certified for Tier 1 companies



MB994IKO-3SB

2 x 2.5" SATA/SAS HDD/SSD & Slim ODD Backplane Cage & Locking Trays



(Slim ODD not included)

- Fits standard 5.25" drive bay
- Hot-swappable 2 x 2.5" HDD/SSD & 1 x Slim ODD
- Supports SATA III / SAS 3.0 (dual channel)
- Fits 5-15mm drive height
- Rugged full metal construction
- Individual 2-segment key lock trays



MB602SPO-B

2 x 2.5" SATA/SAS HDD/SSD & (Ultra) Slim ODD Backplane Cage



- Fits standard 5.25" drive bay
- Hot-swappable 2 x 2.5" HDD/SSD
- Fits 1 x Ultra Slim or Slim ODD
- Supports SATA III / SAS 3.0 (single channel)
- Fits 5-15mm drive height
- Rugged full metal construction



MB994SP-4S

4 x 2.5" SATA/SAS HDD/SSD Backplane Cage



(PCIe 3.0)

- Fits standard 5.25" drive bay
- Hot-swappable 4 x 2.5" HDD/SSD
- Supports SATA III / SAS 3.0 (single channel)
- Fits 5-15mm drive height
- Rugged full metal construction
- UL certified for Tier 1 Companies



MB994SK-1B

4 x 2.5" SATA/SAS HDD/SSD Backplane Cage with Locking Trays



- Fits standard 5.25" drive bay
- Hot-swappable 4 x 2.5" HDD/SSD
- Supports SATA III / SAS 3.0 (single channel)
- Fits 5-15mm drive height
- Rugged full metal construction
- Individual 2-segment key lock trays



MB994SP-4SB-1

4 x 2.5" SATA/SAS HDD/SSD Backplane Cage



- Fits standard 5.25" drive bay
- Hot-swappable 4 x 2.5" HDD/SSD
- Supports SATA III / SAS 3.0 (single channel)
- Fits 5-15mm drive height
- Rugged full metal construction
- Uses 1 x 4pin power for all 4 drives



MB604SPO-B

4 x 2.5" SATA/SAS HDD/SSD & (Ultra)Slim ODD Backplane Cage



- Fits standard 5.25" drive bay
- Hot-swappable 4 x 2.5" HDD/SSD
- Fits 1 x Ultra Slim or Slim ODD
- Supports SATA III / SAS 3.0 (single channel)
- Fits 5-9.5mm drive height
- Rugged full metal construction



MB606SPO-B

6 x 2.5" SATA/SAS HDD/SSD & Ultra Slim ODD Backplane Cage



- Fits standard 5.25" drive bay
- Hot-swappable 6 x 2.5" HDD/SSD
- Fits 1 x Ultra Slim ODD
- Supports SATA III / SAS 3.0 (single channel)
- Fits 5-7mm drive height
- Rugged full metal construction



For 5.25" Drive Bay

MB607SP-B

4 x 2.5" SATA/SAS HDD/SSD Backplane Cage



- Fits standard 5.25" drive bay
- Hot-swappable 4 x 2.5" HDD/SSD
- Supports SATA III / SAS 3.0 (single channel)
- Fits 5-15mm drive height
- Rugged full metal construction
- Uses 1 x 15pin power for all 4 drives



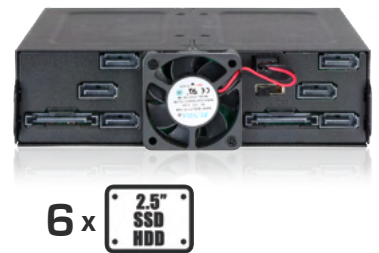
4 x 2.5" SATA HDD

MB608SP-B

6 x 2.5" SATA/SAS HDD/SSD Backplane Cage



- Fits standard 5.25" drive bay
- Hot-swappable 6 x 2.5" HDD/SSD
- Supports SATA III / SAS 3.0 (single channel)
- Fits 5-9.5mm drive height
- Rugged full metal construction
- Uses 2 x 15pin power for all 6 drives



6 x 2.5" SATA HDD

MB699VP-B

4 x 2.5" NVMe U.2 SSD Backplane Cage with Mini-SAS HD Connector



(PCIe 3.0)

- Fits standard 5.25" drive bay
- Hot-pluggable 4 x 2.5" U.2 SSD
- Supports NVMe 32Gbps per channel
- 4 x miniSAS HD (SFF-8643) connector
- Fits 5-15mm drive height
- Rugged full metal construction



4 x U.2 SSD

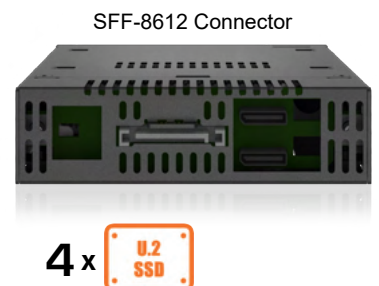
MB699VP-B V2

4 x 2.5" NVMe U.2 SSD Backplane Cage with OCUlink Connector



(PCIe 4.0)

- Fits standard 5.25" drive bay
- Hot-pluggable 4 x 2.5" U.2 SSD
- Supports NVMe 32Gbps per channel
- 4 x OCUlink (SFF-8612) connector
- Fits 5-15mm drive height
- Rugged full metal construction



4 x U.2 SSD

MB720M2K-B

4 x 2.5" NVMe M.2 SSD Backplane Cage with Mini-SAS HD Connector



(PCIe 3.0)

- Fits standard 5.25" drive bay
- Hot-pluggable 4 x M.2 NVMe PCIe SSD
- Supports NVMe 32Gbps per channel
- 4 x miniSAS HD(SFF-8643) connector
- Fits 2230 / 2242 / 2260 / 2280 / 22110
- Tool-less M.2 drive installation
- Individual 2-segment key lock trays

SFF-8643 Connector



4 x 

MB720MK-B V2

4 x 2.5" NVMe M.2 SSD Backplane Cage with OCUlink Connector



(PCIe 4.0)

- Fits standard 5.25" drive bay
- Hot-pluggable 4 x M.2 NVMe PCIe SSD
- Supports NVMe 32Gbps per channel
- 4 x OCUlink (SFF-8612) connector
- Fits 2230 / 2242 / 2260 / 2280 / 22110
- Tool-less M.2 drive installation
- Individual 2-segment key lock trays

SFF-8612 Connector



4 x 

MB872MP-B

12 x SATA M.2 SSD Backplane Cage with OCUlink Connector



- Fits standard 5.25" drive bay
- Hot-swappable 12 x M.2 SATA SSD
- Supports SATA III
- 3 x OCUlink (SFF-8612) connector
- Fits 2230 / 2242 / 2260 / 2280 / 22110
- Tool-less M.2 drive installation
- Rugged full metal construction

SFF-8612 Connector



12 x 

MB873MP-B

8 x NVMe M.2 SSD Backplane Cage with OCUlink Connector



(PCIe 4.0)

- Fits standard 5.25" drive bay
- Hot-pluggable 8 x M.2 NVMe PCIe SSD
- Supports NVMe 32Gbps per channel
- 8 x OCUlink (SFF-8612) connector
- Fits 2230 / 2242 / 2260 / 2280 / 22110
- Tool-less M.2 drive installation
- Rugged full metal construction

SFF-8612 Connector



8 x 

For 5.25" Drive Bay

MB902SPR-B

2 x 2.5" SATA HDD/SSD Backplane Mobile Rack with RAID 1



- Fits standard 5.25" drive bay
- Hot-swappable 2 x 2.5" HDD/SSD
- Support SATA III
- Fits 5-15mm drive height
- Rugged full metal construction
- Built-in hardware RAID 1



MB996SP-6SB

6 x 2.5" SATA/SAS HDD/SSD Backplane Cage



- Fits standard 5.25" drive bay
- Hot-swappable 6 x 2.5" HDD/SSD
- Supports SATA III and SAS 3.0 (single channel)
- Fits 5-9.5mm drive height
- Rugged full metal construction
- Uses 2 x 4pin power for all 6 drives



MB996SK-6SB

6 x 2.5" SATA/SAS HDD/SSD Backplane Cage with Locking Trays



- Fits standard 5.25" drive bay
- Hot-swappable 6 x 2.5" HDD/SSD
- Supports SATA III and SAS 3.0 (single channel)
- Fits 5-9.5mm drive height
- Rugged full metal construction
- Uses 2 x 4pin power for all 6 drives
- Individual 2-segment key lock trays

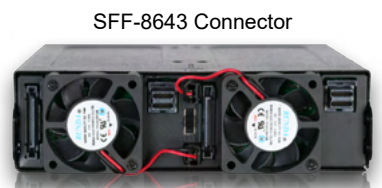


MB998IP-B

8 x 2.5" SATA/SAS HDD/SSD Backplane Cage with Mini-SAS HD Connector



- Fits standard 5.25" drive bay
- Hot-swappable 8 x 2.5" HDD/SSD
- Supports SATA III and SAS 3.0 (single channel)
- Fits 5-7mm drive height
- Rugged full metal construction
- Uses 2 x miniSAS HD port for accessing 8 drives



SFF-8643 Connector

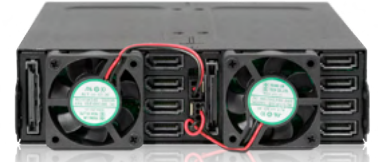


MB998SP-B



8 x 2.5" SATA/SAS HDD/SSD Backplane Cage

- Fits standard 5.25" drive bay
- Hot-swappable 8 x 2.5" HDD/SSD
- Supports SATA III and SAS 3.0 (single channel)
- Fits 5-7mm drive height
- Rugged full metal construction
- Uses 2 x 15pin power for all 8 drives



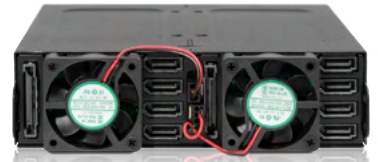
8 x

MB998SK-B



8 x 2.5" SATA/SAS HDD/SSD Backplane Cage with Locking Trays

- Fits standard 5.25" drive bay
- Hot-swappable 8 x 2.5" HDD/SSD
- Supports SATA III and SAS 3.0 (single channel)
- Fits 5-7mm drive height
- Rugged full metal construction
- Uses 2 x 15pin power for all 8 drives
- Individual 2-segment key lock trays



8 x

ToughArmor Series

Full Metal Design



For Dual 5.25" Drive Bay

MB508SP-B



8 x 2.5" SATA/SAS HDD/SSD Backplane Cage with Mini-SAS HD connector

- Fits standard 2 x 5.25" drive bay
- Hot-swappable 8 x 2.5" HDD/SSD
- Supports SATA III and SAS 3.0 (single channel)
- Fits 5-15mm drive height
- Rugged full metal construction
- Uses 2 x miniSAS HD port for accessing 8 drives

SFF-8643 Connector



8 x 2.5" SSD HDD

MB516SP-B



16 x 2.5" SATA/SAS HDD/SSD Backplane Cage with Mini-SAS HD connector

- Fits standard 2 x 5.25" drive bay
- Hot-swappable 16 x 2.5" HDD/SSD
- Supports SATA III and SAS 3.0 (single channel)
- Fits 5-7mm drive height
- Rugged full metal construction
- Uses 4 x miniSAS HD port for accessing 16 drives

SFF-8643 Connector



16 x 2.5" SSD HDD

For Triple 5.25" Drive Bay

MB924IP-B



24 x 2.5" SATA/SAS HDD/SSD Backplane Cage with Mini-SAS HD Connector

- Fits standard 3 x 5.25" drive bay
- Hot-swappable 24 x 2.5" HDD/SSD
- Supports SATA III / SAS 3.0 (single channel)
- Fits 5-7mm drive height
- Rugged full metal construction
- Uses 6 x miniSAS HD port for accessing 24 drives

SFF-8643 Connector



24 x 2.5" SSD HDD

External 2.5" SATA Drive Enclosure

MB991U3-1SB

1 x 2.5" SATA HDD/SSD USB 3.2 Gen1 External Enclosure



- Supports 1 x 2.5" HDD/SSD
- USB 3.2 Gen1 interface with UASP support
- Fits 5-15mm drive height
- Rugged full metal construction
- Safeguard 2-segment key lock system
- Compatible with ToughArmor drive trays including:
MB411(excluding 2B), MB508, MB516, MB924,
MB839, MB60X, MB991, MB992, MB994, MB996,
MB998 series



1 x 



For Slim ODD Drive Bay

MB411SPO-B

1 x 2.5" SATA/SAS HDD/SSD Backplane Mobile Rack for 12.7mm Slim Optical Drive Device



- Fits standard Slim ODD/FDD drive bay
- Hot-swappable 1 x 2.5" HDD/SSD
- Supports SATA III and SAS 3.0 (single channel)
- Fits 5-9.5mm drive height
- Rugged full metal construction
- Uses floppy 4pin power connector



1 x 

For Slim ODD Drive Bay

MB411SKO-B

1 x 2.5" SATA/SAS HDD/SSD Backplane Mobile Rack for 12.7mm Slim Optical Drive Device with Locking Tray



- Fits standard Slim ODD/FDD drive bay
- Hot-swappable 1 x 2.5" HDD/SSD
- Supports SATA III and SAS 3.0 (single channel)
- Fits 5-9.5mm drive height
- Rugged full metal construction
- Individual 2-segment key lock trays
- Uses floppy 4pin power connector



MB411SPO-1B

1 x 2.5" SATA HDD/SSD Backplane Mobile Rack for 12.7mm Slim Optical Drive Device



- Fits standard Slim ODD drive bay
- Hot-swappable 1 x 2.5" HDD/SSD
- Supports SATA III
- Fits 5-9.5mm drive height
- Rugged full metal construction
- Uses standard slimline SATA connector



MB411SPO-2B

1 x 2.5" SATA HDD/SSD Backplane Mobile Rack for 9.5mm Ultra Slim Optical Drive Device



- Fits standard Ultra Slim ODD drive bay
- Hot-swappable 1 x 2.5" HDD/SSD
- Supports SATA III
- Fits 5-7mm drive height
- Rugged full metal construction
- Uses standard slimline SATA connector



MB852M2PO-B

2 x M.2 NVMe PCIe SSD Backplane Mobile Rack for 9.5mm Ultra Slim Optical Drive Device



(PCIe 4.0)

- Fits standard Ultra Slim ODD drive bay
- Hot-pluggable 1 x M.2 NVMe PCIe SSD
- Supports NVMe 64Gbps per channel
- Fits 2230 / 2242 / 2260 / 2280 / 22110
- Tool-less M.2 drive installation
- Uses 2 x OCuLink (SFF-8612) connector



For PCIe Extension Slot

MB839SP-B

1 x 2.5" SATA HDD/SSD to PCIe 2.0 x1 Removable Mobile Rack



- Fits standard PCIe 2.0 x1 / x4 / x8 / x16 slot
- Hot-swappable 1 x 2.5" HDD/SSD
- Supports SATA III
- Fits 5-9.5mm drive height
- Rugged full metal construction



1 x 

MB840M2P-B

1 x M.2 NVMe SSD to PCIe 3.0 x4 Removable Mobile Rack

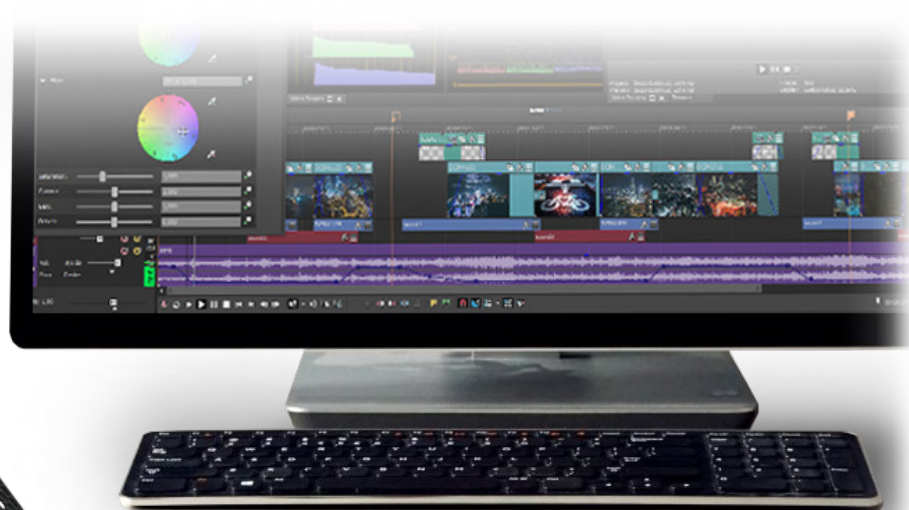


(PCIe 3.0)

- Fits standard PCIe 3.0 x4 / x8 / x16 slot
- Removable 1 x M.2 NVMe PCIe SSD
- Support up to 32Gbps transfer speed
- Fits 2230 / 2242 / 2260 / 2280 / 22110
- Tool-less M.2 drive installation
- Rugged full metal construction



1 x 



For 3.5" Drive Bay

MB741SP-B

1 x 2.5" SATA/SAS HDD/SSD Backplane Mobile Rack



- Fits standard 3.5" drive bay
- Hot-swappable 1 x 2.5" HDD/SSD
- Supports SATA III and SAS 3.0 (single channel)
- Fits 5-15mm drive height
- Tool-less drive installation with Built-in tray screws

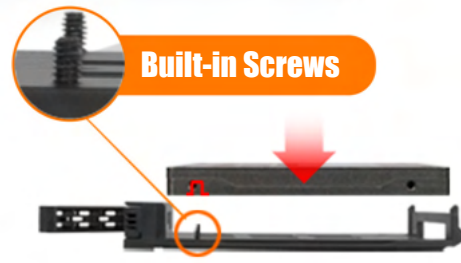


MB742SP-B

2 x 2.5" SATA/SAS HDD/SSD Backplane Mobile Rack



- Fits standard 3.5" drive bay
- Hot-swappable 2 x 2.5" HDD/SSD
- Supports SATA III and SAS 3.0 (single channel)
- Fits 5-9.5mm drive height
- Tool-less drive installation with Built-in tray screws



Built-in Screws

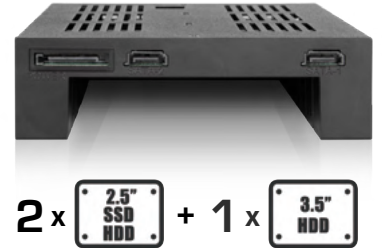
For 5.25" Drive Bay

MB322SP-B

2 x 2.5" SATA/SAS HDD/SSD Backplane Cage + 3.5" HDD/Device



- Fits standard 5.25" drive bay
- Hot-swappable 2 x 2.5" HDD/SSD
- 1 x 3.5" HDD/device slot
- Supports SATA III and SAS 3.0 (single channel)
- Fits 5-9.5mm drive height
- Tool-less drive installation with Built-in tray screws



MB324SP-B

4 x 2.5" SATA/SAS HDD/SSD Backplane Cage



- Fits standard 5.25" drive bay
- Hot-swappable 4 x 2.5" HDD/SSD
- Supports SATA III and SAS 3.0 (single channel)
- Fits 5-12.5mm drive height
- Tool-less drive installation with Built-in tray screws



MB326SP-B

6 x 2.5" SATA HDD/SSD Backplane Cage



- Fits standard 5.25" drive bay
- Hot-swappable 6 x 2.5" HDD/SSD
- Supports SATA III
- Fits 5-9.5mm drive height
- Tool-less drive installation with Built-in tray screws



MB732SPO-B

2 x 2.5" SATA/SAS HDD/SSD & (Ultra)Slim ODD Backplane Cage



- Fits standard 5.25" drive bay
- Hot-swappable 2 x 2.5" HDD/SSD
- Fits 1 x Ultra Slim or Slim ODD
- Supports SATA III and SAS 3.0 (single channel)
- Fits 5-15mm drive height
- Tool-less drive installation with Built-in tray screws



For 3.5" Drive Bay

MB521SP-B

1 x 2.5" SATA/SAS HDD/SSD Docking Backplane Mobile Rack



- Fits standard 3.5" drive bay
- Hot-swappable 1 x 2.5" HDD/SSD
- Supports SATA III and SAS 3.0 (single channel)
- Fits 5-15mm drive height
- Push button to eject drive
- Door-less design for easy drive swapping



MB522SP-B

2 x 2.5" SATA/SAS HDD/SSD Docking Backplane Mobile Rack



- Fits standard 3.5" drive bay
- Hot-swappable 2 x 2.5" HDD/SSD
- Supports SATA III and SAS 3.0 (single channel)
- Fits 5-9.5mm drive height
- Push button to eject drive design
- Door-less design for easy drive swapping



For 5.25" Drive Bay

MB095SP-B

2 x 2.5" + 3.5" SATA HDD/SSD Docking Backplane Cage



- Fits standard 5.25" drive bay
- Hot-swappable 2 x 2.5" + 3.5" HDD/SSD
- Support SATA III
- Fits 2.5" drive up to 9.5mm height
- Pull drive to eject design
- Door-less design for easy drive swapping



MB795SP-B

2.5" + 3.5" SATA HDD/SSD Docking Backplane Cage



- Fits standard 5.25" drive bay
- Hot-swappable 2.5" + 3.5" HDD/SSD
- Supports SATA III
- Fits 2.5" drive up to 9.5mm height
- Support full height 15mm when only use 2.5" drive
- Pull drive to eject design
- Door-less design for easy drive swapping



MB014SP-B

4 x 2.5" SATA/SAS HDD/SSD Docking Backplane Cage



- Fits standard 5.25" drive bay
- Hot-swappable 4 x 2.5" HDD/SSD
- Supports SATA III and SAS 3.0 (single channel)
- Fits 5-9.5mm drive height
- Individual drive power buttons
- Push button to eject drive design
- Door-less design for easy drive swapping



4 x 

For Dual 5.25" Drive Bay

MB830SP-B

3 x 3.5" SATA/SAS HDD Docking Backplane Cage



- Fits standard 2 x 5.25" drive bay
- Hot-swappable 4 x 3.5" HDD
- Supports SATA III and SAS 3.0 (single channel)
- Pull drive to eject design
- Door-less design for easy drive swapping



3 x 

For Slim ODD Drive Bay

MB511SPO-B

1 x 2.5" SATA HDD/SSD Docking for 12.7mm Slim CD/DVD-ROM Optical Bay



- Fits standard Slim ODD bay
- Hot-swappable 1 x 2.5" HDD/SSD
- Supports SATA III
- Fits 5-9.5mm drive height
- Individual drive powers switch
- Push button to eject drive design



1 x 

MB511SPO-1B

1 x 2.5" SATA HDD/SSD Docking for 9.5mm Ultra Slim CD/DVD-ROM Optical Bay



- Fits standard Ultra Slim ODD bay
- Hot-swappable 1 x 2.5" HDD/SSD
- Supports SATA III
- Fits 5-7mm drive height
- Individual drive powers switch
- Push button to eject drive design



1 x 

For Internal 2.5" Drive Bay

MB703M2P-B

1 x M.2 SATA SSD Converter Adapter



- Fits standard 2.5" drive bay
- Hot-swappable 1 x M.2 SATA SSD
- Supports SATA III
- Fits 2230 / 2242 / 2260 / 2280
- Tool-less M.2 drive installation
- Same dimension as standard 2.5" SSD



1 x M.2 SSD

MB705M2P-B

1 x M.2 NVMe PCIe SSD Converter Adapter



(PCIe 3.0)

- Fits standard 2.5" drive bay
- Hot-pluggable 1 x M.2 NVMe PCIe SSD
- Support up to 32Gbps transfer speed
- Fits 2230 / 2242 / 2260 / 2280
- Tool-less M.2 drive installation
- Same dimension as standard 2.5" U.2 SSD



SFF-8639 Connector

1 x M.2 SSD

MB705MP-B V2

1 x M.2 NVMe PCIe SSD Converter Adapter



(PCIe 4.0)

- Fits standard 2.5" drive bay
- Hot-pluggable 1 x M.2 NVMe PCIe SSD
- Support up to 64Gbps transfer speed
- Fits 2230 / 2242 / 2260 / 2280
- Tool-less M.2 drive installation
- Same dimension as standard 2.5" U.2 SSD



SFF-8639 Connector

1 x M.2 SSD

Complete Tool-less Installation/Removal

Adjustable locker slide

2280
(80x22mm)

2260
(60x22mm)

2242
(42x22mm)

2230
(30x22mm)

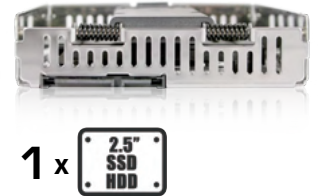
For Internal 3.5" Drive Bay

MB382SP-3B

1 x 2.5" SATA/SAS HDD/SSD Converter Adapter

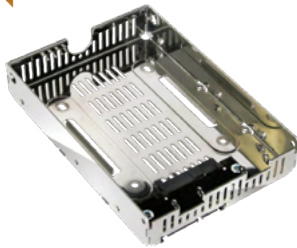


- Fits standard 3.5" drive bay
- Hot-swappable 1 x 2.5" HDD/SSD
- Supports SATA III and SAS 3.0 (single channel)
- Fits 5-15mm drive height
- Tool-less 2.5" drive installation
- Same dimension as standard 3.5" HDD
- Drive stabilizing & self-adjusting mechanism

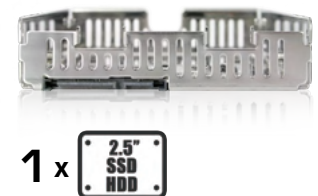


MB482SP-3B

1 x 2.5" SATA/SAS HDD/SSD Converter Adapter



- Fits standard 3.5" drive bay
- Hot-swappable 1 x 2.5" HDD/SSD
- Supports SATA III and SAS 3.0 (single channel)
- Fits 5-15mm drive height
- Same dimension as standard 3.5" HDD
- Rugged full metal construction

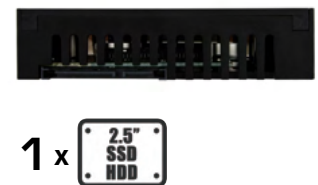


MB882SP-1S-1B

1 x 2.5" SATA/SAS HDD/SSD Converter Adapter



- Fits standard 3.5" drive bay
- Hot-swappable 1 x 2.5" HDD/SSD
- Supports SATA III and SAS 3.0 (single channel)
- Fits 5-12.5mm drive height
- Tool-less 2.5" drive installation
- Same dimension as standard 3.5" HDD
- Easily secure drive w/ self-adjusting mechanism

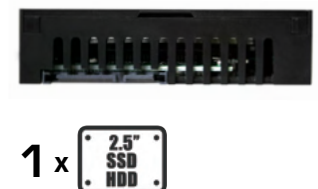


MB882SP-1S-2B

1 x 2.5" SATA/SAS HDD/SSD Converter Adapter



- Fits standard 3.5" drive bay
- Hot-swappable 1 x 2.5" HDD/SSD
- Supports SATA III and SAS 3.0 (single channel)
- Fits 5-12.5mm drive height
- Tool-less 2.5" drive installation
- Same dimension as standard 3.5" HDD



For Internal 3.5" Drive Bay

MB882SP-1S-3B

1 x 2.5" SATA/SAS HDD/SSD Converter Adapter



(HDD not included)

- Fits standard 3.5" drive bay
- Hot-swappable 1 x 2.5" HDD/SSD
- Supports SATA III and SAS 3.0 (single channel)
- Fits 5-15mm drive height
- Tool-less 2.5" drive installation
- Same dimension as standard 3.5" HDD



MB982SP-1S

1 x 2.5" SATA/SAS HDD/SSD Converter Adapter



- Fits standard 3.5" drive bay
- Hot-swappable 1 x 2.5" HDD/SSD
- Supports SATA III and SAS 3.0 (single channel)
- Fits 5-15mm drive height
- Tool-less 2.5" drive installation
- Same dimension as standard 3.5" HDD
- Rugged full metal construction



MB982IP-1S-1

1 x 2.5" SAS HDD/SSD Converter Adapter



- Fits standard 3.5" drive bay
- Hot-swappable 1 x 2.5" HDD/SSD
- Support SAS 3.0 (dual channel)
- Fits 5-15mm drive height
- Tool-less 2.5" drive installation
- Same dimension as standard 3.5" HDD
- Rugged full metal construction



MB982SPR-2S R1

2 x 2.5" SATA HDD/SSD Converter Adapter with RAID 0/1/BIG/JBOD



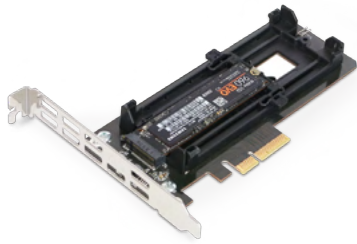
- Fits standard 3.5" drive bay
- Hot-swappable 2 x 2.5" HDD/SSD
- Supports SATA III
- Fits 5-9.5mm drive height
- Tool-less 2.5" drive installation
- Rugged full metal construction
- Build-in hardware RAID 0/1/BIG/JBOD



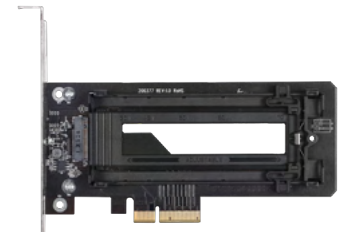
PCIe Expansion Slot Enclosures

MB987M2P-B

1 x M.2 NVMe PCIe SSD to PCIe 3.0 x4 Adapter & PCIe Bracket



- Fits standard PCIe 3.0 x4 / x8 / x16 slot
- Support 1 x M.2 NVMe PCIe SSD
- Support up to 32Gbps transfer speed
- Fits 2230 / 2242 / 2260 / 2280 / 22110
- Tool-less M.2 drive installation



1 x M.2 SSD

MB987M2P-1B

1 x M.2 NVMe SSD to PCIe 3.0 x4 Adapter with Heat Sink & PCIe Bracket



- Fits standard PCIe 3.0 x4 / x8 / x16 slot
- Support 1 x M.2 NVMe PCIe SSD
- Support up to 32Gbps transfer speed
- Fits 2230 / 2242 / 2260 / 2280 / 22110
- Tool-less M.2 drive installation
- Integrated heat sink and ample ventilation for excellent passive cooling



1 x M.2 SSD

MB987M2P-2B

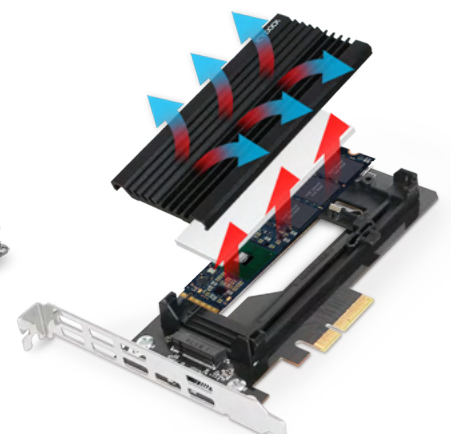
1 x M.2 NVMe PCIe SSD to PCIe 3.0 x4 Adapter with Heatsink



- Fits standard PCIe 3.0 x4 / x8 / x16 slot
- Support 1 x M.2 NVMe PCIe SSD
- Support up to 32Gbps transfer speed
- Fits 2230 / 2242 / 2260 / 2280 / 22110
- Tool-less M.2 drive installation
- Integrated heat sink and ample ventilation for excellent passive cooling



1 x M.2 SSD



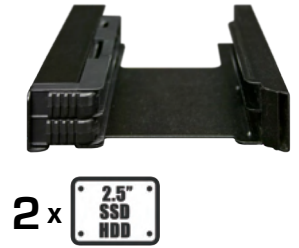
For Internal 3.5" Drive Bay

MB082SP

2 x 2.5" HDD/SSD Mounting Bracket



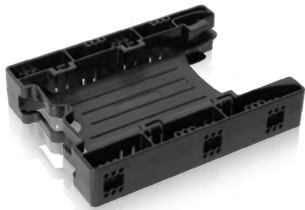
- Fits standard 3.5" drive bay
- Removable 2 x 2.5" HDD/SSD
- Fits 5-9.5mm drive height
- Tool-less 2.5" drive installation
- Rugged full metal construction



2 x 

MB290SP-B

2 x 2.5" HDD/SSD Mounting Bracket



- Fits standard 3.5" drive bay
- Removable 2 x 2.5" HDD/SSD
- Fits 5-9.5mm drive height
- Tool-less 2.5" drive installation
- 60 screw holes provide max flexibility of installation



2 x 

MB610SP

3 x 2.5" HDD/SSD Mounting Bracket



- Fits standard 3.5" drive bay
- Removable 3 x 2.5" HDD/SSD
- Fits 5-15mm drive height
- Tool-less 2.5" drive installation
- High-density drive design
- 60 screw holes provide max flexibility of installation



3 x 

MB082SP-1

With Cables



MB290SP-1B

With Cables



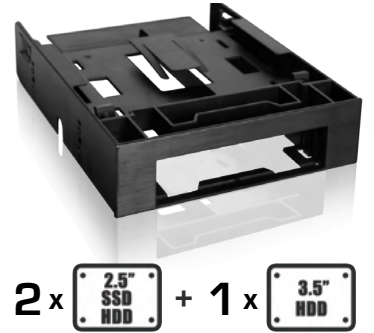
For 5.25" Drive Bay

MB343SP

2 x 2.5" HDD/SSD & 1 x 3.5" HDD Mounting Bracket



- Fits standard 5.25" drive bay
- Removable 2 x 2.5" HDD/SSD
- 1 x 3.5" HDD/device slot
- Fits 2.5" drives up to 5-9.5mm height
- Tool-less 2.5" drive installation



MB343SPO

1 x 3.5" HDD/Device & Ultra Slim ODD Mounting Bracket

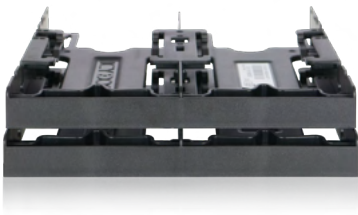


- Fits standard 5.25" drive bay
- 1 x Ultra Slim ODD Slot (9.5mm height)
- 1 x 3.5" HDD/device slot

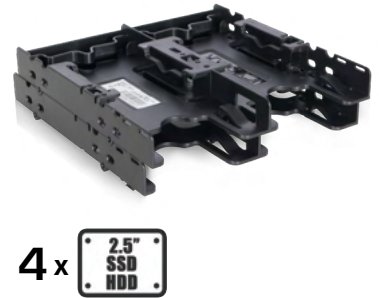


MB344SP

4 x 2.5" HDD/SSD Mounting Bracket



- Fits standard 5.25" drive bay
- Removable 4 x 2.5" HDD/SSD
- Fits 5-9.5mm drive height
- Tool-less 2.5" drive installation

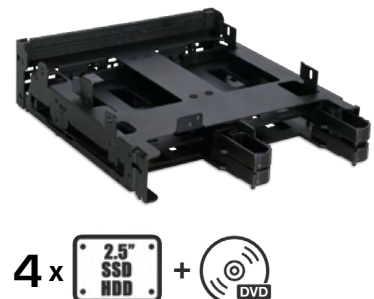


MB344SPO

4 x 2.5" HDD/SSD + (Ultra) Slim ODD Mounting Bracket



- Fits standard 5.25" drive bay
- Removable 4 x 2.5" HDD/SSD
- Fits 5-9.5mm drive height
- 1 x (Ultra) Slim ODD slot (12.7 / 9.5mm height)
- Tool-less 2.5" drive installation



External M.2 SSD Enclosure

MB809U3-1M2B

1 x M.2 SATA SSD USB 3.2 Gen1 External Enclosure



(USB 3.2 Gen1)

- Supports 1 x M.2 SATA SSD
- Supports USB 3.2 Gen1 interface (up to 5Gbps transfer speed)
- Fits 2230 / 2242 / 2260 / 2280
- Tool-less M.2 drive installation



MB861U31-1M2B

1 x M.2 NVMe PCIe HDD/SSD USB 3.2 Gen2 External Enclosure



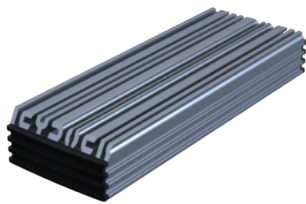
(USB 3.2 Gen2)

- Support 1 x M.2 NVMe PCIe SSD
- Supports USB 3.2 Gen2 interface (up to 10Gbps transfer speed)
- Fits 2230 / 2242 / 2260 / 2280 / 22110
- Tool-less 2.5" drive installation



MB061U-1MB

1 x M.2 NVMe PCIe HDD/SSD USB 3.2 Gen2x2 External Enclosure



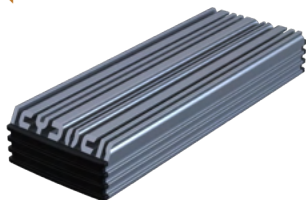
(USB 3.2 Gen2x2)

- Supports 1 x M.2 NVMe PCIe SSD
- Supports USB 3.2 Gen2x2 interface (up to 20Gbps transfer speed)
- Fits 2230 / 2242 / 2260 / 2280
- Tool-less M.2 drive installation



MB961U-1MB

1 x M.2 NVMe PCIe HDD/SSD USB 3.2 Gen2 External Enclosure



(USB 3.2 Gen2)

- Supports 1 x M.2 NVMe PCIe SSD
- Supports USB 3.2 Gen2 Interface (up to 10Gbps transfer speed)
- Fits 2230 / 2242 / 2260 / 2280
- Tool-less M.2 drive installation



External 2.5" SSD Enclosure

MB931U-1VB

1 x 2.5" U.2 NVMe SSD to USB 3.2 Gen2 Adapter



(USB 3.2 Gen2)

- Supports 1 x U.2 NVMe SSD
- Supports USB 3.2 Gen2 interface (up to 10Gbps transfer speed)
- Fits 7-15mm drive height
- Tool-less U.2 drive installation
- Large slide-switch on/off drive power button



1x 

MB031U-1SMB

1 x 2.5"/M.2 SATA SSD to USB 3.2 Gen1 Adapter



(USB 3.2 Gen1)

- Supports 1 x 2.5" / M.2 SATA SSD
- Supports USB 3.2 Gen1 interface (up to 5Gbps transfer speed)
- Fits 2.5" drive up to 15mm height
- Fits 2230 / 2242 / 2260 / 2280 / 22110
- Tool-less 2.5" / M.2 drive installation
- Large slide-switch on/off drive power button



1x  / 



For 5.25" Drive Bay

MB171SP-B

3.5" SATA/SAS HDD/SSD Backplane Cage



- Fits standard 5.25" drive bay
- Hot-swappable 1 x 3.5" HDD
- Supports SATA III and SAS 3.0 (single channel)
- Equips 80mm Fan to cool drive
- Tray-less design for easy drive swapping
- Rugged full metal construction
- Safeguard 2-segment key lock system

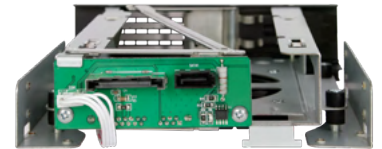


MB171SP-1B

3.5" SATA/SAS HDD/SSD Backplane Cage



- Fits standard 5.25" drive bay
- Hot-swappable 1 x 3.5" HDD
- Support SATA III / SAS 3.0 (single channel)
- Tray-less design for easy drive swapping
- Rugged full metal construction



MB876SK-B

2.5"/3.5" SATA/SAS HDD/SSD Backplane Cage



- Fits standard 5.25" drive bay
- Hot-swappable 2.5" / 3.5" HDD/SSD
- Supports SATA III and SAS 2.0 (single channel)
- Fits 2.5" drives up to 5-15mm height
- Full aluminum body construction
- Safeguard 2-segment key lock system



MB971SP-B

2.5" + 3.5" SATA HDD/SSD Docking Backplane Cage



- Fits standard 5.25" drive bay
- Hot-swappable 2.5" + 3.5" HDD/SSD
- Supports SATA III
- Fits 2.5" drives up to 9.5mm height
- Support full height 15mm when only use 2.5" drive
- Eject design to pull drive
- Door-less design for easy drive swapping



MB971SPO-B

3.5" SATA HDD Docking & Ultra Slim ODD Backplane Cage



- Fits standard 5.25" drive bay
- Hot-swappable 3.5" HDD
- Fits 1 x Ultra Slim ODD
- Supports SATA III
- Eject design to pull drive
- Door-less design for easy drive swapping



For Dual 5.25" Drive Bay

MB153SP-B

3 x 2.5"/3.5" SATA/SAS HDD/SSD Backplane Cage



- Fits standard 2 x 5.25" drive bay
- Hot-swappable 3 x 2.5" / 3.5" HDD/SSD
- Supports SATA III and SAS 3.0 (single channel)
- Fits 2.5" drive up to 5-15mm height
- 80mm cooling fan with full metal body
- Removable tray design for internal drive security



MB901SPR-B

2 x 2.5"/3.5" SATA/SAS HDD/SSD Backplane Cage with RAID 1



- Fits standard 2 x 5.25" drive bay
- Hot-swappable 2 x 2.5" / 3.5" HDD/SSD
- Support SATA III
- Fits 2.5" drive up to 5-15mm height
- Built-in hardware RAID 1



For Triple 5.25" Drive Bay

MB155SP-B

5 x 2.5"/3.5" SATA/SAS HDD/SSD Backplane Cage



- Fits standard 3 x 5.25" drive bay
- Hot-swappable 5 x 2.5" / 3.5" HDD/SSD
- Support SATA III / SAS 3.0 (single channel)
- Fits 2.5" drive up to 5-15mm height
- 92mm cooling fan with full metal body
- Removable tray design for internal drive security



For External 3.5" Drive Bay

CP099

Dual NF1(NGSFF/M.3)/M.2 NVMe SSD Backplane Mobile Rack



(PCIe 3.0)

- Fits standard 3.5" drive bay
- Hot-pluggable 2 x NF1/M.2 NVMe PCIe SSD
- Support NVMe 32Gbps NF1/M.2
- 2 x miniSAS HD (SFF-8643) connector
- Tool-less NF1/M.2 drive installation
- Safeguard 2-segment key lock system



CP100-1

1 x 2.5" SATA SSD/HDD Rugged Mobile Rack with IP65 Waterproof & Dustproof Panel



- Fits standard 3.5" drive bay
- Hot-swappable 1 x 2.5" HDD/SSD
- Support SATA III
- Fits 5-15mm drive height
- Safeguard 2-segment key lock system
- IP65 waterproof and dustproof design on the front panel



CP100-2

2 x 2.5" SATA SSD/HDD Rugged Mobile Rack with IP65 Waterproof & Dustproof Panel



- Fits standard 3.5" drive bay
- Hot-swappable 2 x 2.5" HDD/SSD
- Support SATA III
- Fits 5-9.5mm drive height
- Safeguard 2-segment key lock system
- IP65 waterproof and dustproof design on the front panel



CP091

2 x M.2 NVMe SSD Backplane Mobile Rack with LCD



(PCIe 3.0)

- Fits standard 3.5" drive bay
- Hot-pluggable 2 x M.2 NVMe PCIe SSD
- Support NVMe 32Gbps transfer speed
- Fits 2230 / 2242 / 2260 / 2280 / 22110
- Safeguard 2-segment key lock system
- LCD screen to monitor temperature of each bay



CP078

Quad Bay M.2 SATA SSD Backplane Mobile Rack



- Fits standard 3.5" drive bay
- Hot-pluggable 4 x M.2 SATA SSD
- Support SATA III
- Fits 2230 / 2242 / 2260 / 2280
- Rugged full metal construction



For 5.25" Drive Bay

CP097

8 x U.2 NVMe SSD Backplane Cage



(PCIe 3.0)

- Fits standard 5.25" drive bay
- Hot-pluggable 8 x 2.5" U.2 SSD
- Supports NVMe 32Gbps per channel
- 8 x OCUlink (SFF-8612) connector
- Fits 5-7mm drive height
- Rugged full metal construction

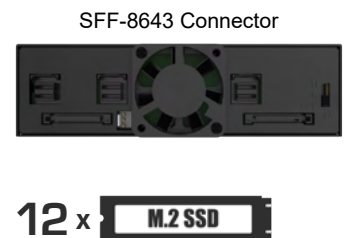


CP093

12 x M.2 SATA SSD Backplane Cage (Sneakernet Data Transfer Module)



- Fits standard 5.25" drive bay
- Hot-swappable 12 x M.2 SATA SSD
- Supports SATA III
- Fits 2230 / 2242 / 2260 / 2280 / 22110
- 3 x miniSAS HD (SFF-8643) connector
- Rugged full metal construction



CP082-1

2 x 2.5" U.2 NVMe SSD + 4 x 2.5" SAS/SATA SSD/HDD Backplane Cage



- Fits standard 5.25" drive bay
- Hot-pluggable 2 x 2.5" U.2 SSD + 4 x 2.5" HDD/SSD
- Supports NVMe 32Gbps for U.2 SSD
- Supports SATA III / SAS (single channel) for 2.5" drives
- 3 x miniSAS HD (SFF-8643) connector
- Fits 5-15mm 2.5" U.2 SSD
- Fits 5-7mm 2.5" SATA/SAS SSD/HDD



For 5.25" Drive Bay

CP082-2

2 x 2.5" U.2 NVMe SSD + 6 x M.2 SATA SSD Backplane Cage



- Fits standard 5.25" drive bay
- Hot-pluggable 2 x 2.5" U.2 SSD + 6 x M.2 SATA SSD
- Supports NVMe 32Gbps for U.2 SSD
- Supports SATA III for M.2 SATA SSD
- 2 x miniSAS HD (SFF-8643) and 2 x OCUlink (SFF-8612) connector
- Fits 5-15mm 2.5" U.2 SSD
- Fits 2230 / 2242 / 2260 / 2280 / 22110 M.2 SATA SSD

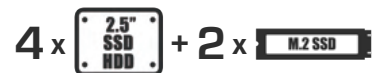


CP082-3

2 x M.2 NVMe SSD + 4 x 2.5" SAS/SATA SSD/HDD Backplane Cage



- Fits standard 5.25" drive bay
- Hot-pluggable 2 x M.2 NVMe PCIe SSD + 4 x 2.5" HDD/SSD
- Supports NVMe 32Gbps for M.2 SSD
- Supports SATA III / SAS 3.0 (single channel) for 2.5" drives
- 3 x miniSAS HD (SFF-8643) connector
- Fits 2230 / 2242 / 2260 / 2280 / 22110 M.2 NVMe SSD
- Fits 5-7mm 2.5" SATA/SAS SSD/HDD

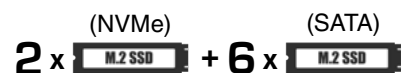


CP082-4

2 x M.2 NVMe SSD + 6 x M.2 SATA SSD Backplane Cage



- Fits standard 5.25" drive bay
- Hot-pluggable 2 x M.2 NVMe PCIe SSD + 6 x M.2 SATA SSD
- Supports NVMe 32Gbps for M.2 NVMe PCIe SSD
- Supports SATA III for M.2 SATA SSD
- 2 x miniSAS HD (SFF-8643) and 2 x OCUlink (SFF-8612) connector
- Fits 2230 / 2242 / 2260 / 2280 / 22110



For Dual 5.25" Drive Bay

CP104

8 x U.2 NVMe SSD Backplane Cage



(PCIe 3.0)

- Fits standard 2 x 5.25" drive bay
- Hot-pluggable 8 x 2.5" U.2 SSD
- Supports NVMe 32Gbps per channel
- 8 x OCUlink (SFF-8612) connector
- Fits 5-15mm drive height
- Rugged full metal construction

SFF-8612 Connector



8 x U.2 SSD

CP092-1

12 x 2.5" SAS/SATA SSD Backplane Cage (Sneakernet Data Transfer Module)



- Fits standard 2 x 5.25" drive bay
- Hot-swappable 12 x 2.5" SATA/SAS HDD/SSD
- Supports SATA III / SAS 3.0 (single channel)
- 3 x miniSAS HD (SFF-8643) connector
- Fits 5-7mm drive height
- Rugged full metal construction

SFF-8643 Connector



12 x 2.5" SSD HDD

CP092-2

6 x 2.5" U.2 NVMe SSD Backplane Cage (Sneakernet Data Transfer Module)



(PCIe 3.0)

- Fits standard 2 x 5.25" drive bay
- Hot-pluggable 6 x 2.5" U.2 SSD
- Supports NVMe 32Gbps per channel
- 8 x miniSAS HD (SFF-8643) connector
- Fits 5-15mm drive height
- Rugged full metal construction

SFF-8643 Connector



6 x U.2 SSD

For Triple 5.25" Drive Bay

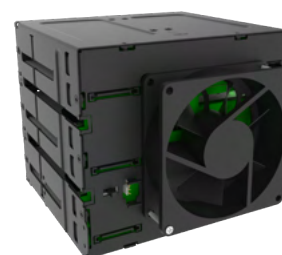
CP054

12 x 2.5" SATA/SAS HDD/SSD Backplane Cage with Mini-SAS HD Connector



- Fits standard 3 x 5.25" drive bay
- Hot-swappable 12 x 2.5" HDD/SSD
- Supports SATA III / SAS 3.0 (single channel)
- Fits 5-15mm drive height
- Rugged full metal construction
- Uses 3 x miniSAS HD port for accessing 12 drives

SFF-8643 Connector



12 x 2.5" SSD HDD

For (Ultra) Slim ODD Drive Bay

CP086

2 x M.2 SATA SSD Backplane Mobile Rack with RAID 0/1



- Fits Ultra Slim ODD drive bay
- Hot-swappable 2 x M.2 SATA SSD
- Supports SATA III
- Fits 2230 / 2242 / 2260 / 2280
- Rugged full metal construction
- Uses standard slimline SATA connector
- Tool-less M.2 drive installation
- Built-in hardware RAID 0/1



CP085

2 x M.2 SATA SSD Backplane Mobile Rack



- Fits Ultra Slim ODD drive bay
- Hot-swappable 2 x M.2 SATA SSD
- Supports SATA III
- Fits 2230 / 2242 / 2260 / 2280
- Rugged full metal construction
- Tool-less M.2 drive installation



CP083

1 x M.2 NVMe SSD Backplane Mobile Rack with Single Slot for SD card Reader



- Fits ultra slim ODD drive bay
- Hot-pluggable 1 x M.2 NVMe PCIe SSD
- Support 1 x SD card reader slot (half and full duplex)
- Support NVMe 32Gbps M.2
- Fits 2230 / 2242 / 2260 / 2280 / 22110
- Tool-less M.2 drive installation
- Rugged full metal construction



ICY DOCK®

www.icydock.com

ICY DOCK USA

11740 Clark St.
Arcadia, CA 91006
Tel: +1 626-956-8800
Fax: +1 626-795-9985

ICY DOCK Germany

Weidenweg 21H.
47059 Duisburg
Tel: +49 (0)203-931-519-40
Fax: +49 (0)203-931-519-62

ICY DOCK France

4, Allée Trait d'Union
77127 Lieusaint
Tel: +33 (0)1-64-88-42-64
Fax: +33 (0)9-81-40-19-06

ICY DOCK Japan

東京都文京区湯島
2-33-9ミツオ湯島
ビル4F
Tel: +81 03-5826-4155
Fax: +91 03-5826-4156

ICY DOCK Taiwan

241新北市三重區
重新路5段609巷
18號2樓
Tel: +886 2-2999-3251
Fax: +886 2-2999-3478

ICY DOCK China

深圳市宝安区松岗街道
燕川社区紅湖路108号
爰商科技园1号楼C座5楼
Tel: +86 755-29932556 x853
Fax: +86 755-82670236