



ICY DOCK®

Bringing Innovation & **Difference**

Product Guide

About Us / OEM Services

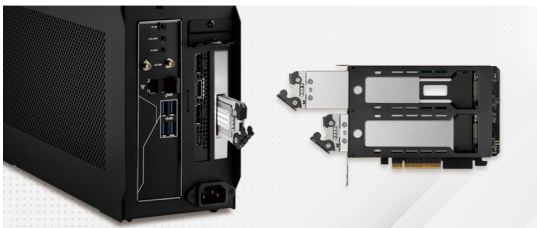
Tailored to your product specifications, ICY DOCK offers flexible designs and houses a dedicated product development team to quickly turn your dream into reality.



- 04 About ICY DOCK**
- 05 OEM / ODM Solutions**

ToughArmor Series

Full-metal, rugged SSD/HDD drive cage built for most demanding environments to safeguard your critical data.



- 06 For 3.5" Drive Bay** U.2 / U.3 SSD Mobile Rack
M.2 SSD Mobile Rack
2.5" SAS / SATA Mobile Rack
- 10 For 5.25" Drive Bay** U.2 / U.3 SSD Mobile Rack
M.2 SSD Mobile Rack
2.5" SAS / SATA Mobile Rack
- 16 For Dual / Triple 5.25" Drive Bay** 2.5" SAS / SATA Mobile Rack
- 17 External 2.5" SATA Drive Enclosure** 2.5" SAS / SATA Mobile Rack
- 17 For (Ultra) Slim ODD Drive Bay** M.2 SSD Mobile Rack
2.5" SAS / SATA Mobile Rack
- 19 For PCIe expansion slot** U.2 / U.3 SSD Mobile Rack
M.2 SSD Mobile Rack
2.5" SAS / SATA Mobile Rack

ExpressCage Series

State of the art SSD/HDD mobile rack with unique tool-less drive installation tray designed for easy hot swap and quick installation of drives while maintaining the innate protection of a drive tray.



- 20 For 3.5" Drive Bay** 2.5" SAS / SATA Mobile Rack
- 20 For 5.25" Drive Bay** 2.5" SAS / SATA Mobile Rack

flexiDOCK Series

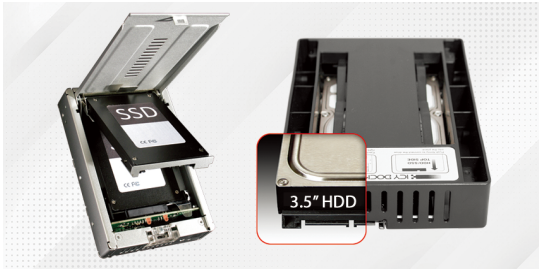
Aimed for studio applications, flexiDock SSD/HDD docking stations are built for easy hot swapping between different data drives and individual power buttons for separate workflow control.



- 22 For 3.5" Drive Bay** U.2 / U.3 SSD Mobile Rack
2.5" SAS / SATA Mobile Rack
- 22 For 5.25" Drive Bay** 2.5" SAS / SATA Mobile Rack
- 23 For Dual 5.25" Drive Bay** 3.5" SAS / SATA Mobile Rack

EZConvert Series

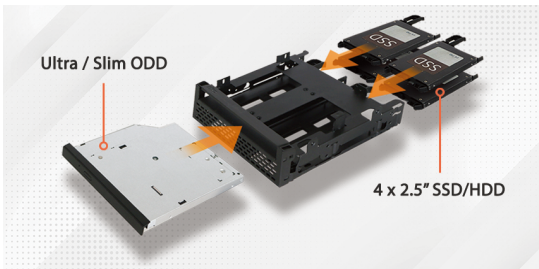
Fully-enclosed, tool-less 2.5" to 3.5" SSD/HDD drive adapter with exact same dimensions and screw hole locations of a 3.5" HDD drive, making them the first choice for adapting 2.5" SSD form factor inside 3.5" HDD desktop PCs, servers and workstations.



- 24 For Internal 2.5" Drive Bay
- 24 For Internal 3.5" Drive Bay
- 25 For PCIe expansion slot

Bracket Series

Creating more flexibility and maximizing the space efficiency of a standard device/drive bay by allowing accommodations for multiple drives/devices in a given space.



- 26 For 3.5" Drive Bay
- 27 For 5.25" Drive Bay

ICYNano & EZ-Adapter

One of a kind tool-less drive installation NVMe SSD enclosure designed as a tool for media professionals or power users to store, transfer and remove their valuable data while being fully protected by ICY DOCK's 3 year warranty.



- 28 External M.2 SSD Enclosure
- 28 External U.2 SSD Enclosure
- 29 External 2.5" / M.2 SSD Enclosure

3.5" HDD Mobile Racks

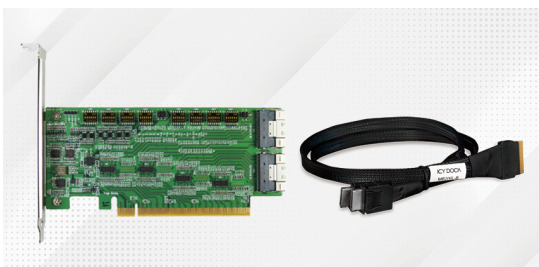
Made with quality material and unique ID design, ICY DOCK 3.5" HDD/SSD cage offers convenience for users to hot swap or transport drives in and out of the system with ease.



- 30 For 5.25" Drive Bay
- 31 For Dual / Triple 5.25" Drive Bays

Add cards & Cables

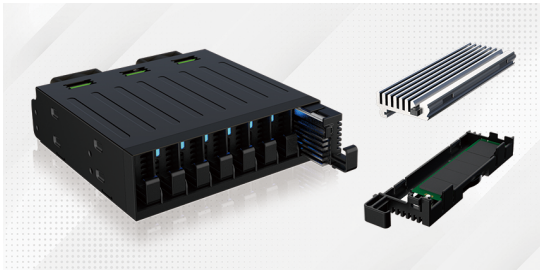
The ICY DOCK cables are verified with ICY DOCK drive enclosures, HBA/RAID cards, and meet UL20744 certification and safety requirements for quality and performance.



- 32 Interface Cables
- 32 High-Speed Add-on Cards

Concept Products

Constantly innovating concept products to complement enterprise storage applications based on user experiences & feedbacks.



- 33 For 5.25" Drive Bay** E1.S SSD Mobile Rack
U.2 / U.3 SSD Mobile Rack
2.5" SAS / SATA Mobile Rack
- 34 For Dual 5.25" Drive Bay** U.2 / U.3 SSD Mobile Rack
- 34 External M.2 / U.2 SSD Enclosure** U.2 SSD Mobile Rack
M.2 SSD Mobile Rack
- 35 For PCIe Extension Slot** E3.S SSD Mobile Rack
E1.S SSD Mobile Rack
M.2 SSD Mobile Rack



ICYDOCK believes that innovations will revolutionize computer data storage by bringing new design and form factor into the market. We are always trying to deliver the highest quality products to exceed customer expectations. As we release new product to the market, we continue to bring new concept products, prototypes designed, modified and adapted to meet customer's requests and valuable feedbacks.

Our Sales, marketing and engineering team will carefully review every submitted concept product idea and respond to the creator. The concept product page will be showcased on our website for market feedback. Once the idea is proven to be sustainable by the market's demand, like Midas' hand, we will turn the suggestion into, not gold in this case, but into a real product. On top of that, the person who provided the original idea will receive a working concept product before we officially release it to the public.



ICY DOCK®

Bringing Innovation & Difference

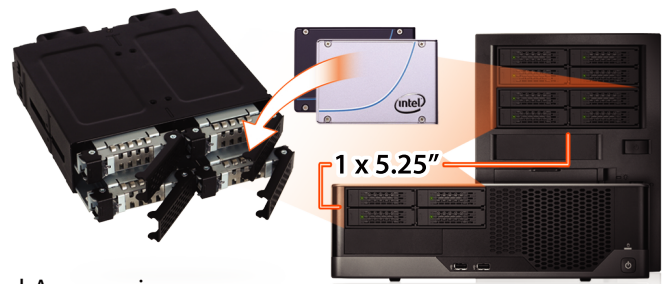


About ICY DOCK:

ICY DOCK is a privately held company with 27 years of experience in designing, manufacturing, branding and distributing computer data storage and enclosure peripherals, especially in industrial and rugged computer data storage. We believe our innovations will revolutionize computer data storage by bringing new designs and form factors into the market, providing improvements and convenience in computer data management for small businesses, government, industrial, military, and medical industries.

ICY DOCK became a global leader in the computer data storage industry, utilizing designing and manufacturing capabilities since 1992. Adhering to strict manufacturing guidelines and having creative product designing teams in California, USA, ICY DOCK delivers the highest quality products to exceed customer expectations and offers one of a kind products to satisfy customer's needs.

- 27-year of product design experiences
- Product research & development team located in California, USA.
- Various USA patented products from ICY DOCK's original design.
- Long product lifecycle with average more than ten years.
- Industry-leading 3-year standard warranty and 5-year warranty on the ToughArmor series.
- Offer removable drive functionality, hot-swap capabilities, modular design aiming for user convenience in computer data storage field.
- Ability to make revisions to our designs to fit the needs of system integrators, manufacturers, and government.
- Strategically incorporated branch offices throughout the world to provide immediate support to local customers.



In Partnership with:



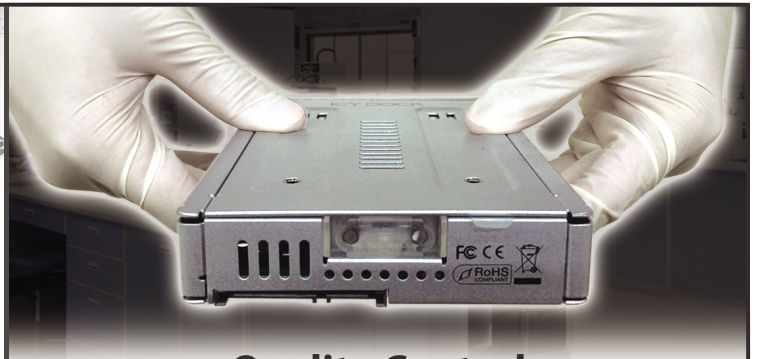
OEM/ODM Solutions:

Having decades of experience in innovating difference, ICY DOCK is truly an expert in designing and customizing data storage peripherals. From consumer graded to enterprise ranked data storage systems, any level of expertise is not a compromise to us. Since our first establishment in 1992, ICY DOCK has led the industry in designing revolutionary products such as the first SCSI module and the first 2.5" to 3.5" SSD converter. This is why top-tier companies such as GE, HP and Google choose and trust ICY DOCK's product to safeguard their mission-critical data. It is our prime responsibility to provide satisfaction and guarantee to any of your special OEM or ODM requests. On the top of all that, having privately owned factories and a specialized OEM engineering team, ICY DOCK has the ability to allow fast turn-around rate, customized manufacture process and provide top-of-line service to your valuable OEM/ODM requests.



Design and Manufacture

ICY DOCK has its own experienced engineering team designated to provide the best service and solution for your mission critical projects. Also, having 30 years of expertise in the field, ICY DOCK acquired the ability to withstand and accomplish the toughest project and will only bring perfection to meet your request.



Quality Control

ICY DOCK's factory is under the certification of ISO 9001: 2015. All of our products are ensured with highest standard by passing tedious quality assurances and numerous stress tests. Other certification, such as CE, RoHS, UL, ML-STD and more, can also be complied if requested by customer.



Production Facility

ICY DOCK has its own production facilities for best product regulation and fast production turn around rate.



Global Support

Having offices located worldwide, ICY DOCK can provide pre- and post-sales customer service to our valuable customers anywhere.

FOR 3.5" DRIVE BAY

MB092VK-B

2 x 2.5" NVMe U.2/U.3 SSD Backplane Mobile Rack with Slimline SAS Connector



Drive Tray # MB991TRAY-B

- Fits standard 3.5" drive bay
- Hot-pluggable 2 x 2.5" U.2/U.3 SSD
- Supports NVMe 64Gbps
- Fits 5-9.5mm drive height
- Rugged full metal construction
- Safeguard 2-segment key lock system
- Supports Tri-mode controller cards with SFF-9402 pin-out

SFF-8654 4i Connector



MB601VK-B

1 x 2.5" NVMe U.2/U.3/SATA HDD/SSD Backplane Mobile Rack (147mm Depth)



Drive Tray # MB991TRAY-B

- Fits standard 3.5" drive bay
- Hot-pluggable 1 x 2.5" HDD/SSD
- Supports NVMe 64Gbps/SATA III
- Fits 5-15mm drive height
- Rugged full metal construction
- Safeguard 2-segment key lock system

SFF-8639 Connector



MB601VK-1B

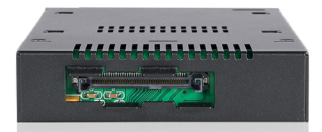
1 x 2.5" NVMe U.2/U.3/SATA HDD/SSD Backplane Mobile Rack with U.2 Connector (168.7mm Depth)



Drive Tray # MB601TP-B

- Fits standard 3.5" drive bay
- Hot-pluggable 1 x 2.5" HDD/SSD
- Supports NVMe 64Gbps/SATA III
- Fits 5-15mm drive height
- Rugged full metal construction
- Safeguard 2-segment key lock system

SFF-8639 Connector



MB601M2K-1B

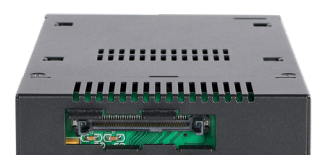
1 x NVMe M.2 SSD Backplane Mobile Rack with U.2 Connector



Drive Tray # MB601TP-1B

- Fits standard 3.5" drive bay
- Hot-pluggable 1 x M.2 NVMe PCIe SSD
- Supports NVMe 64Gbps per channel
- Fits 2230/2242/2260/2280/22110 M.2 SSD
- Rugged full metal construction
- Safeguard 2-segment key lock system

SFF-8639 Connector



MB833M2K-B

1 x NVMe M.2 SSD Backplane Mobile Rack with Mini-SAS HD Connector



Drive Tray # MB834TP-B

- Fits standard 3.5" drive bay
- Hot-pluggable 1 x M.2 NVMe PCIe SSD
- Supports NVMe 64Gbps per channel
- Fits 2230/2242/2260/2280/22110 M.2 SSD
- Rugged full metal construction
- Safeguard 2-segment key lock system



SFF-8643 Connector



MB833MK-B V2

1 x NVMe M.2 SSD Backplane Mobile Rack with Slimline SAS Connector



Drive Tray # MB834TP-B

- Fits standard 3.5" drive bay
- Hot-pluggable 1 x M.2 NVMe PCIe SSD
- Supports NVMe 64Gbps per channel
- Fits 2230/2242/2260/2280/22110 M.2 SSD
- Rugged full metal construction
- Safeguard 2-segment key lock system
- Supports Tri-mode controller cards with SFF-9402 pin-out



SFF-8654 4i Connector



MB834M2K-B

2 x NVMe M.2 SSD Backplane Mobile Rack with Mini-SAS HD Connector



Drive Tray # MB834TP-B

- Fits standard 3.5" drive bay
- Hot-pluggable 2 x M.2 NVMe PCIe SSD
- Supports NVMe 64Gbps per channel
- Fits 2230/2242/2260/2280/22110 M.2 SSD
- Rugged full metal construction
- Safeguard 2-segment key lock system



SFF-8643 Connector



MB834MK V2

2 x NVMe M.2 SSD Backplane Mobile Rack with Slimline SAS Connector



Drive Tray # MB834TP-B

- Fits standard 3.5" drive bay
- Hot-pluggable 2 x M.2 NVMe PCIe SSD
- Supports NVMe 64Gbps per channel
- Fits 2230/2242/2260/2280/22110 M.2 SSD
- Rugged full metal construction
- Safeguard 2-segment key lock system
- Supports Tri-mode controller cards with SFF-9402 pin-out

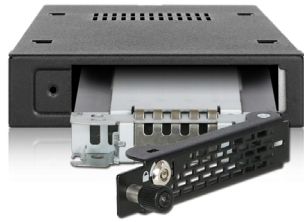


SFF-8654 4i Connector



MB491SKL-B

1 x 2.5" SATA/SAS HDD/SSD Backplane Mobile Rack with Thumbscrew Design



Drive Tray # MB491TKL-B

- Fits standard 3.5" drive bay
- Hot-swappable 1 x 2.5" HDD/SSD
- Supports SATA III/SAS 3.0 (single channel)
- Fits 5-15mm drive height
- Rugged full metal construction
- Key & thumbscrew dual lock system

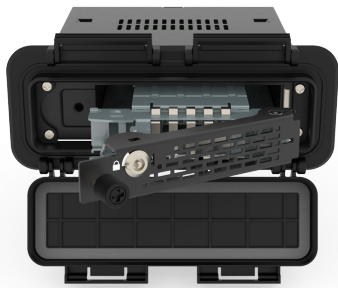


1 x 

Available in Q2

MB491SKL-1B

1 x 2.5" SATA/SAS HDD/SSD Backplane Mobile Rack with Thumbscrew Design and Water-Resistant Cover



Drive Tray # MB491TKL-B

- Fits standard 3.5" drive bay
- Hot-swappable 1 x 2.5" HDD/SSD
- Supports SATA III/SAS 3.0 (single channel)
- Fits 5-15mm drive height
- Rugged full metal construction
- Key & thumbscrew dual lock system
- IP65 waterproof and dustproof design



1 x 

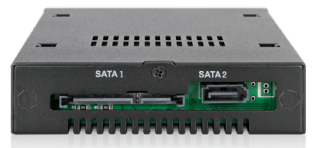
MB492SKL-B

2 x 2.5" SATA/SAS HDD/SSD Backplane Mobile Rack with Thumbscrew Design



Drive Tray # MB492TKL-B

- Fits standard 3.5" drive bay
- Hot-swappable 2 x 2.5" HDD/SSD
- Supports SATA III/SAS 3.0 (single channel)
- Fits 5-9.5mm drive height
- Rugged full metal construction
- Key & thumbscrew dual lock system



2 x 

MB991IK-B

1 x 2.5" SATA/SAS HDD/SSD Backplane Mobile Rack



Drive Tray # MB991TRAY-B

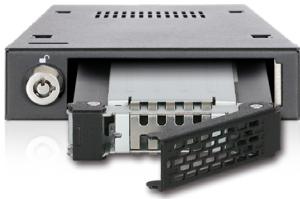
- Fits standard 3.5" drive bay
- Hot-swappable 1 x 2.5" HDD/SSD
- Supports SATA III/SAS 3.0 (dual channel)
- Fits 5-15mm drive height
- Rugged full metal construction
- Safeguard 2-segment key lock system



1 x 

MB991SK-B

1 x 2.5" SATA/SAS HDD/SSD Backplane Mobile Rack



Drive Tray # MB991TRAY-B

- Fits standard 3.5" drive bay
- Hot-swappable 1 x 2.5" HDD/SSD
- Supports SATA III/SAS 3.0 (single channel)
- Fits 5-15mm drive height
- Rugged full metal construction
- Safeguard 2-segment key lock system



MB992SK-B

2 x 2.5" SATA/SAS HDD/SSD Backplane Mobile Rack



Drive Tray # MB992TRAY-B
Key-Lock Tray # MB996TK-B

- Fits standard 3.5" drive bay
- Hot-swappable 2 x 2.5" HDD/SSD
- Supports SATA III/SAS 3.0 (single channel)
- Fits 5-9.5mm drive height
- Rugged full metal construction
- Safeguard 2-segment key lock system



MB992SKR-B

2 x 2.5" SATA HDD/SSD Backplane Mobile Rack with RAID 0/1/BIG/JBOD



Drive Tray # MB992TRAY-B
Key-Lock Tray # MB996TK-B

- Fits standard 3.5" drive bay
- Hot-swappable 2 x 2.5" HDD/SSD
- Supports SATA III
- Fits 5-9.5mm drive height
- Rugged full metal construction
- Safeguard 2-segment key lock system
- Built-in hardware RAID 0/1/BIG/JBOD



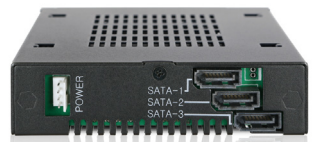
MB993SK-B

3 x 2.5" SATA/SAS HDD/SSD Backplane Mobile Rack



Drive Tray # MB993TP-B

- Fits standard 3.5" drive bay
- Hot-swappable 3 x 2.5" HDD/SSD
- Supports SATA III/SAS 3.0 (single channel)
- Fits 5-7mm drive height
- Rugged full metal construction
- Safeguard 2-segment key lock system



FOR 5.25" DRIVE BAY

MB105VP-B



Drive Tray # MB991TRAY-B
Key-Lock Tray # MB994TK-B

2 x 2.5" NVMe U.2/U.3 SSD Backplane Cage with Slimline SAS Connector

- Fits standard 5.25" drive bay
- Hot-pluggable 2 x 2.5" U.2/U.3 SSD
- Supports NVMe 64Gbps per channel
- Fits 5-15mm drive height
- Rugged full metal construction
- Supports Tri-mode controller cards with SFF-9402 pin-out

SFF-8654 8i Connector



2 x U.2 / U.3 SSD

MB118VP-B



Drive Tray # MB992TRAY-B
Key-Lock Tray # MB996TK-B

6 x 2.5" NVMe U.2/U.3 SSD Backplane Cage with Slimline SAS Connector

- Fits standard 5.25" drive bay
- Hot-pluggable 6 x 2.5" U.2/U.3 SSD
- Supports NVMe 64Gbps per channel
- Fits 5-9.5mm drive height
- Rugged full metal construction
- Supports Tri-mode controller cards with SFF-9402 pin-out

SFF-8654 8i Connector



6 x U.2 / U.3 SSD

MB699VP-B



Drive Tray # MB991TRAY-B
Key-Lock Tray # MB994TK-B

4 x 2.5" NVMe U.2/U.3 SSD Backplane Cage with OCUlink Connector

- Fits standard 5.25" drive bay
- Hot-pluggable 4 x 2.5" U.2/U.3 SSD
- Supports NVMe 64Gbps per channel
- 4 x miniSAS HD (SFF-8643) connector
- Fits 5-15mm drive height
- Rugged full metal construction

SFF-8643 Connector



4 x U.2 / U.3 SSD

MB699VP-B V3



Drive Tray # MB991TRAY-B
Key-Lock Tray # MB994TK-B

4 x 2.5" NVMe U.2/U.3 SSD Backplane Cage with OCUlink Connector

- Fits standard 5.25" drive bay
- Hot-pluggable 4 x 2.5" U.2/U.3 SSD
- Supports NVMe 64Gbps per channel
- 4 x OCUlink (SFF-8612) connector
- Fits 5-15mm drive height
- Supports Tri-mode controller cards with SFF-9402 pin-out

SFF-8612 Connector



4 x U.2 / U.3 SSD

MB720M2K-B

4 x NVMe M.2 SSD Backplane Cage with Mini-SAS HD Connector



Drive Tray # MB720TK-B

- Fits standard 5.25" drive bay
- Hot-pluggable 4 x M.2 NVMe PCIe SSD
- Supports NVMe 64Gbps per channel
- 4 x miniSAS HD(SFF-8643) connector
- Fits 2230/2242/2260/2280/22110 M.2 SSD
- Tool-less M.2 drive installation
- Individual 2-segment key lock trays

SFF-8643 Connector



MB720MK-B V3

4 x NVMe M.2 SSD Backplane Cage with OCUlink Connector



Drive Tray # MB720TK-B

- Fits standard 5.25" drive bay
- Hot-pluggable 4 x M.2 NVMe PCIe SSD
- Supports NVMe 64Gbps per channel
- 4 x OCUlink (SFF-8612) connector
- Fits 2230/2242/2260/2280/22110 M.2 SSD
- Tool-less M.2 drive installation
- Supports Tri-mode controller cards with SFF-9402 pin-out

SFF-8612 Connector



MB873MP-B V2

8 x NVMe M.2 SSD Backplane Cage with OCUlink Connector



Drive Tray # MB840TP-B

- Fits standard 5.25" drive bay
- Hot-pluggable 8 x M.2 NVMe PCIe SSD
- Supports NVMe 64Gbps per channel
- 8 x OCUlink (SFF-8612) connector
- Fits 2230/2242/2260/2280/22110 M.2 SSD
- Tool-less M.2 drive installation
- Rugged full metal construction
- Supports Tri-mode controller cards with SFF-9402 pin-out

SFF-8612 Connector



MB872MP-B

12 x SATA M.2 SSD Backplane Cage with OCUlink Connector



Drive Tray # MB840TP-B

- Fits standard 5.25" drive bay
- Hot-swappable 12 x M.2 SATA SSD
- Supports SATA III
- 3 x OCUlink (SFF-8612) connector
- Fits 2230/2242/2260/2280/22110 M.2 SSD
- Tool-less M.2 drive installation
- Rugged full metal construction

SFF-8612 Connector



MB602SPO-B

2 x 2.5" SATA/SAS HDD/SSD & (Ultra) Slim ODD Backplane Cage

(Slim ODD not included)



Drive Tray # MB991TRAY-B
Key-Lock Tray # MB994TK-B

- Fits standard 5.25" drive bay
- Hot-swappable 2 x 2.5" HDD/SSD
- Fits 1 x Ultra Slim or Slim ODD
- Supports SATA III/SAS 3.0 (single channel)
- Fits 5-15mm drive height
- Rugged full metal construction



MB604SPO-B

4 x 2.5" SATA/SAS HDD/SSD & (Ultra)Slim ODD Backplane Cage

(Slim ODD not included)



Drive Tray # MB992TRAY-B
Key-Lock Tray # MB996TK-B

- Fits standard 5.25" drive bay
- Hot-swappable 4 x 2.5" HDD/SSD
- Fits 1 x Ultra Slim or Slim ODD
- Supports SATA III/SAS 3.0 (single channel)
- Fits 5-9.5mm drive height
- Rugged full metal construction



MB606SPO-B

6 x 2.5" SATA/SAS HDD/SSD & Ultra Slim ODD Backplane Cage

(Slim ODD not included)



Drive Tray # MB998TP-B
Key-Lock Tray # MB998TK-B

- Fits standard 5.25" drive bay
- Hot-swappable 6 x 2.5" HDD/SSD
- Fits 1 x Ultra Slim ODD
- Supports SATA III/SAS 3.0 (single channel)
- Fits 5-7mm drive height
- Rugged full metal construction



MB607SP-B

4 x 2.5" SATA/SAS HDD/SSD Backplane Cage



Drive Tray # MB991TRAY-B
Key-Lock Tray # MB994TK-B

- Fits standard 5.25" drive bay
- Hot-swappable 4 x 2.5" HDD/SSD
- Supports SATA III/SAS 3.0 (single channel)
- Fits 5-15mm drive height
- Rugged full metal construction
- Uses 1 x 15pin power for all 4 drives



MB902SPR-B R1

2 x 2.5" SATA HDD/SSD Backplane Cage with RAID 1 & JBOD



Drive Tray # MB991TRAY-B
Key-Lock Tray # MB994TK-B

- Fits standard 5.25" drive bay
- Hot-swappable 2 x 2.5" HDD/SSD
- Supports SATA III
- Fits 5-15mm drive height
- Rugged full metal construction
- Built-in hardware RAID 1 & JBOD



MB994IKO-3SB

2 x 2.5" SATA/SAS HDD/SSD & Slim ODD Backplane Cage & Locking Trays

(Slim ODD not included)



Key-Lock Tray # MB994TK-B

- Fits standard 5.25" drive bay
- Hot-swappable 2 x 2.5" HDD/SSD & 1 x Slim ODD
- Supports SATA III/SAS 3.0 (dual channel)
- Fits 5-15mm drive height
- Rugged full metal construction
- Individual 2-segment key lock trays



MB994IPO-3SB

2 x 2.5" SATA/SAS HDD/SSD & Slim ODD Backplane Cage

(Slim ODD not included)



Drive Tray # MB991TRAY-B
Key-Lock Tray # MB994TK-B

- Fits standard 5.25" drive bay
- Hot-swappable 2 x 2.5" HDD/SSD & 1 x Slim ODD
- Supports SATA III/SAS 3.0 (dual channel)
- Fits 5-15mm drive height
- Rugged full metal construction



MB994SK-1B

4 x 2.5" SATA/SAS HDD/SSD Backplane Cage with Locking Trays



Key-Lock Tray # MB994TK-B

- Fits standard 5.25" drive bay
- Hot-swappable 4 x 2.5" HDD/SSD
- Supports SATA III/SAS 3.0 (single channel)
- Fits 5-15mm drive height
- Rugged full metal construction
- Individual 2-segment key lock trays



MB994SP-4S

4 x 2.5" SATA/SAS HDD/SSD Backplane Cage



Drive Tray # MB991TRAY-B
Key-Lock Tray # MB994TK-B

- Fits standard 5.25" drive bay
- Hot-swappable 4 x 2.5" HDD/SSD
- Supports SATA III/SAS 3.0 (single channel)
- Fits 5-15mm drive height
- Rugged full metal construction



4 x 2.5" SSD HDD

MB994SP-4SB-1

4 x 2.5" SATA/SAS HDD/SSD Backplane Cage



Drive Tray # MB991TRAY-B
Key-Lock Tray # MB994TK-B

- Fits standard 5.25" drive bay
- Hot-swappable 4 x 2.5" HDD/SSD
- Supports SATA III/SAS 3.0 (single channel)
- Fits 5-15mm drive height
- Rugged full metal construction
- Uses 1 x 4pin power for all 4 drives



4 x 2.5" SSD HDD

MB996SK-6SB

6 x 2.5" SATA/SAS HDD/SSD Backplane Cage with Locking Trays



Key-Lock Tray # MB996TK-B

- Fits standard 5.25" drive bay
- Hot-swappable 6 x 2.5" HDD/SSD
- Supports SATA III and SAS 3.0 (single channel)
- Fits 5-9.5mm drive height
- Rugged full metal construction
- Uses 2 x 4pin power for all 6 drives
- Individual 2-segment key lock trays



6 x 2.5" SSD HDD

MB996SP-6SB

6 x 2.5" SATA/SAS HDD/SSD Backplane Cage



Drive Tray # MB992TRAY-B
Key-Lock Tray # MB996TK-B

- Fits standard 5.25" drive bay
- Hot-swappable 6 x 2.5" HDD/SSD
- Supports SATA III and SAS 3.0 (single channel)
- Fits 5-9.5mm drive height
- Rugged full metal construction
- Uses 2 x 4pin power for all 6 drives



6 x 2.5" SSD HDD

MB998SK-B

8 x 2.5" SATA/SAS HDD/SSD Backplane Cage with Locking Trays



Key-Lock Tray # MB998TK-B

- Fits standard 5.25" drive bay
- Hot-swappable 8 x 2.5" HDD/SSD
- Supports SATA III and SAS 3.0 (single channel)
- Fits 5-7mm drive height
- Rugged full metal construction
- Uses 2 x 15pin power for all 8 drives
- Individual 2-segment key lock trays



8 x **2.5" SSD HDD**

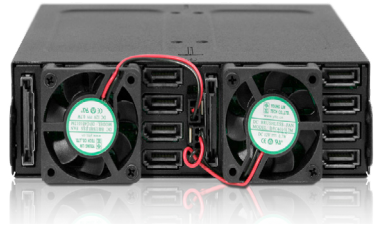
MB998SP-B

8 x 2.5" SATA/SAS HDD/SSD Backplane Cage



Drive Tray # MB998TP-B
Key-Lock Tray # MB998TK-B

- Fits standard 5.25" drive bay
- Hot-swappable 8 x 2.5" HDD/SSD
- Supports SATA III and SAS 3.0 (single channel)
- Fits 5-7mm drive height
- Rugged full metal construction
- Uses 2 x 15pin power for all 8 drives



8 x **2.5" SSD HDD**

MB998IP-B

8 x 2.5" SATA/SAS HDD/SSD Backplane Cage



Drive Tray # MB998TP-B
Key-Lock Tray # MB998TK-B

- Fits standard 5.25" drive bay
- Hot-swappable 8 x 2.5" HDD/SSD
- Supports SATA III and SAS 3.0 (single channel)
- Fits 5-7mm drive height
- Rugged full metal construction
- Uses 2 x 15pin power for all 8 drives



8 x **2.5" SSD HDD**

SFF-8643 Connector

FOR DUAL 5.25" DRIVE BAY

MB508SP-B

8 x 2.5" SATA/SAS HDD/SSD Backplane Cage with Mini-SAS HD connector



Drive Tray # MB991TRAY-B
Key-Lock Tray # MB994TK-B

- Fits standard 2 x 5.25" drive bay
- Hot-swappable 8 x 2.5" HDD/SSD
- Supports SATA III and SAS 3.0 (single channel)
- Fits 5-15mm drive height
- Rugged full metal construction
- Uses 2 x miniSAS HD port for accessing 8 drives

SFF-8643 Connector



8 x 

MB516SP-B

16 x 2.5" SATA/SAS HDD/SSD Backplane Cage with Mini-SAS HD connector



Drive Tray # MB998TP-B
Key-Lock Tray # MB998TK-B

- Fits standard 2 x 5.25" drive bay
- Hot-swappable 16 x 2.5" HDD/SSD
- Supports SATA III and SAS 3.0 (single channel)
- Fits 5-7mm drive height
- Rugged full metal construction
- Uses 4 x miniSAS HD port for accessing 16 drives

SFF-8643 Connector



16 x 

FOR TRIPLE 5.25" DRIVE BAY

MB924IP-B

24 x 2.5" SATA/SAS HDD/SSD Backplane Cage with Mini-SAS HD Connector



Drive Tray # MB998TP-B
Key-Lock Tray # MB998TK-B

- Fits standard 3 x 5.25" drive bay
- Hot-swappable 24 x 2.5" HDD/SSD
- Supports SATA III / SAS 3.0 (single channel)
- Fits 5-7mm drive height
- Rugged full metal construction
- Uses 6 x miniSAS HD port for accessing 24 drives

SFF-8643 Connector



24 x 

EXTERNAL 2.5" SATA DRIVE ENCLOSURE

MB991U3-1SB

1 x 2.5" SATA HDD/SSD USB 3.2 Gen1 External Enclosure



Drive Tray # MB991TRAY-B

- Supports 1 x 2.5" HDD/SSD
- USB 3.2 Gen1 interface with UASP support
- Fits 5-15mm drive height
- Rugged full metal construction
- Safeguard 2-segment key lock system
- Compatible with ToughArmor drive trays including: MB411(excluding 2B), MB508, MB516, MB924, MB839, MB60X(excluding MB601), MB991, MB992, MB994, MB996, MB998 series



1 x 



Universal Drive Tray Slot
Fits ToughArmor Drive Trays

FOR (ULTRA) SLIM ODD DRIVE BAY

MB852M2PO-B

2 x M.2 NVMe PCIe SSD Backplane Mobile Rack for 9.5mm Ultra Slim Optical Drive Device



Drive Tray # MB840TP-B

- Fits standard Ultra Slim ODD drive bay
- Hot-pluggable 1 x M.2 NVMe PCIe SSD
- Supports NVMe 64Gbps per channel
- Fits 2230/2242/2260/2280/22110 M.2 SSD
- Tool-less M.2 drive installation
- Uses 2 x OCuLink (SFF-8612) connector



2 x 

MB411SKO-B

1 x 2.5" SATA/SAS HDD/SSD Backplane Mobile Rack for 12.7mm Slim Optical Drive Device with Locking Tray



Key-Lock Tray # MB996TK-B

- Fits standard Slim ODD/FDD drive bay
- Hot-swappable 1 x 2.5" HDD/SSD
- Supports SATA III and SAS 3.0 (single channel)
- Fits 5-9.5mm drive height
- Rugged full metal construction
- Individual 2-segment key lock trays
- Uses floppy 4pin power connector



MB411SPO-B

1 x 2.5" SATA/SAS HDD/SSD Backplane Mobile Rack for 12.7mm Slim Optical Drive Device



Drive Tray # MB992TRAY-B
Key-Lock Tray # MB996TK-B

- Fits standard Slim ODD/FDD drive bay
- Hot-swappable 1 x 2.5" HDD/SSD
- Supports SATA III and SAS 3.0 (single channel)
- Fits 5-9.5mm drive height
- Rugged full metal construction
- Uses floppy 4pin power connector



MB411SPO-1B

1 x 2.5" SATA HDD/SSD Backplane Mobile Rack for 12.7mm Slim Optical Drive Device



Drive Tray # MB992TRAY-B
Key-Lock Tray # MB996TK-B

- Fits standard Slim ODD drive bay
- Hot-swappable 1 x 2.5" HDD/SSD
- Supports SATA III
- Fits 5-9.5mm drive height
- Rugged full metal construction
- Uses standard slimline SATA connector



MB411SPO-2B

1 x 2.5" SATA HDD/SSD Backplane Mobile Rack for 9.5mm Ultra Slim Optical Drive Device



Drive Tray # MB993TP-B

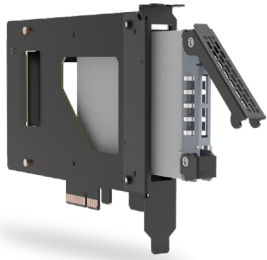
- Fits standard Ultra Slim ODD drive bay
- Hot-swappable 1 x 2.5" HDD/SSD
- Supports SATA III
- Fits 5-7mm drive height
- Rugged full metal construction
- Uses standard slimline SATA connector



FOR PCIE EXPANSION SLOT

MB111VP-B

1 x 2.5" NVMe U.2/U.3 SSD Removable Mobile Rack



Drive Tray # MB992TRAY-B
Key-Lock Tray # MB996TK-B

- Fits standard PCIe 4.0 x4/x8/x16 slot
- Removable 1 x 2.5" U.2/U.3 SSD
- Supports up to 64Gbps transfer speed
- Fits 5-9.5mm drive height
- Rugged full metal construction



1 x 

MB840M2P-B

1 x M.2 NVMe SSD to PCIe 4.0 x4 Removable Mobile Rack



Drive Tray # MB840TP-B

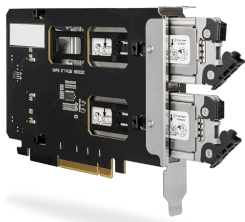
- Fits standard PCIe 4.0 x4/x8/x16 slot
- Removable 1 x M.2 NVMe PCIe SSD
- Supports up to 64Gbps transfer speed
- Fits 2230/2242/2260/2280/22110 M.2 SSD
- Tool-less M.2 drive installation
- Rugged full metal construction



1 x 

MB842MP-B

2 x M.2 NVMe SSD to PCIe 4.0 x8 Removable Mobile Rack (PCIe Bifurcation Required)



Drive Tray # MB840TP-B

- Fits standard PCIe 4.0 x8/x16 slot
- Removable 2 x M.2 NVMe PCIe SSD
- Supports up to 64Gbps transfer speed
- Fits 2230/2242/2260/2280/22110 M.2 SSD
- Tool-less M.2 drive installation
- Rugged full metal construction



2 x 

MB839SP-B

1 x 2.5" SATA HDD/SSD to PCIe 2.0 x1 Removable Mobile Rack



Drive Tray # MB992TRAY-B
Key-Lock Tray # MB996TK-B

- Fits standard PCIe 2.0 x1/x4/x8/x16 slot
- Hot-swappable 1 x 2.5" HDD/SSD
- Supports SATA III
- Fits 5-9.5mm drive height
- Rugged full metal construction



1 x 

FOR 3.5" DRIVE BAY

MB741SP-B

1 x 2.5" SATA/SAS HDD/SSD Backplane Mobile Rack



Drive Tray # MB741TP-B

- Fits standard 3.5" drive bay
- Hot-swappable 1 x 2.5" HDD/SSD
- Supports SATA III and SAS 3.0 (single channel)
- Fits 5-15mm drive height
- Tool-less drive installation with Built-in tray screws



1 x 

MB742SP-B

2 x 2.5" SATA/SAS HDD/SSD Backplane Mobile Rack



Drive Tray # MB742TP-B

- Fits standard 3.5" drive bay
- Hot-swappable 2 x 2.5" HDD/SSD
- Supports SATA III and SAS 3.0 (single channel)
- Fits 5-9.5mm drive height
- Tool-less drive installation with Built-in tray screws



2 x 

FOR 5.25" DRIVE BAY

MB322SP-B

2 x 2.5" SATA/SAS HDD/SSD Backplane Cage + 3.5" HDD/Device



Drive Tray # MB322TP-B

- Fits standard 5.25" drive bay
- Hot-swappable 2 x 2.5" HDD/SSD
- 1 x 3.5" HDD/device slot
- Supports SATA III and SAS 3.0 (single channel)
- Fits 5-9.5mm drive height
- Tool-less drive installation with Built-in tray screws



2 x  + 1 x 

MB324SP-B

4 x 2.5" SATA/SAS HDD/SSD Backplane Cage



Drive Tray # MB324TP-B

- Fits standard 5.25" drive bay
- Hot-swappable 4 x 2.5" HDD/SSD
- Supports SATA III and SAS 3.0 (single channel)
- Fits 5-12.5mm drive height
- Tool-less drive installation with Built-in tray screws



4 x 

MB326SP-B

6 x 2.5" SATA HDD/SSD Backplane Cage



Drive Tray # MB322TP-B

- Fits standard 5.25" drive bay
- Hot-swappable 6 x 2.5" HDD/SSD
- Supports SATA III
- Fits 5-9.5mm drive height
- Tool-less drive installation with Built-in tray screws



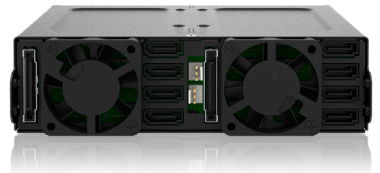
MB038SP-B

8 x 2.5" SATA/SAS HDD/SSD Backplane Cage



Drive Tray # MB038TP-B

- Fits standard 5.25" drive bay
- Hot-swappable 8 x 2.5" HDD/SSD
- Supports SATA III and SAS 3.0 (single channel)
- Fits 5-7mm drive height



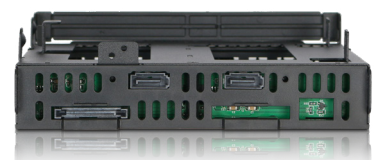
MB732SPO-B

2 x 2.5" SATA/SAS HDD/SSD & (Ultra)Slim ODD Backplane Cage



Drive Tray # MB732TP-B

- Fits standard 5.25" drive bay
- Hot-swappable 2 x 2.5" HDD/SSD
- Fits 1 x Ultra Slim or Slim ODD
- Supports SATA III and SAS 3.0 (single channel)
- Fits 5-15mm drive height
- Tool-less drive installation with Built-in tray screws



FOR 3.5" DRIVE BAY

MB021VP-B

1 x 2.5" NVMe U.2/U.3 SSD Docking Backplane Mobile Rack



- Fits standard 3.5" drive bay
- Hot-pluggable 1 x 2.5" U.2/U.3 SSD
- Supports NVMe 64Gbps per channel
- Fits 5-15mm drive height
- Push button to eject drive
- Door-less design for easy drive swapping

SFF-8654 4i Connector



MB521SP-B

1 x 2.5" SATA/SAS HDD/SSD Docking Backplane Mobile Rack



- Fits standard 3.5" drive bay
- Hot-swappable 1 x 2.5" HDD/SSD
- Supports SATA III and SAS 3.0 (single channel)
- Fits 5-15mm drive height
- Push button to eject drive
- Door-less design for easy drive swapping



MB522SP-B

2 x 2.5" SATA/SAS HDD/SSD Docking Backplane Mobile Rack



- Fits standard 3.5" drive bay
- Hot-swappable 2 x 2.5" HDD/SSD
- Supports SATA III and SAS 3.0 (single channel)
- Fits 5-9.5mm drive height
- Push button to eject drive design
- Door-less design for easy drive swapping



FOR 5.25" DRIVE BAY

MB014SP-B R1

4 x 2.5" SATA/SAS HDD/SSD Docking Backplane Cage



- Fits standard 5.25" drive bay
- Hot-swappable 4 x 2.5" HDD/SSD
- Supports SATA III and SAS 3.0 (single channel)
- Fits 5-9.5mm drive height
- Individual drive power buttons
- Push button to eject drive design
- Door-less design for easy drive swapping



MB024SP-B

4 x 2.5" SATA/SAS HDD/SSD Docking Backplane Cage



- Fits standard 5.25" drive bay
- Hot-swappable 4 x 2.5" HDD/SSD
- Supports SATA III and SAS 3.0 (single channel)
- Fits 5-9.5mm drive height
- Pull drive to eject design
- Door-less design for easy drive swapping



MB095SP-B

2 x 2.5" + 3.5" SATA HDD/SSD Docking Backplane Cage

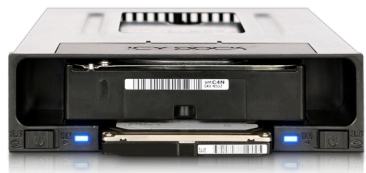


- Fits standard 5.25" drive bay
- Hot-swappable 2 x 2.5" + 3.5" HDD/SSD
- Supports SATA III
- Fits 2.5" drive up to 9.5mm height
- Pull drive to eject design
- Door-less design for easy drive swapping



MB795SP-B

2.5" + 3.5" SATA HDD/SSD Docking Backplane Cage



- Fits standard 5.25" drive bay
- Hot-swappable 2.5" + 3.5" HDD/SSD
- Supports SATA III
- Fits 2.5" drive up to 9.5mm height
- Supports full height 15mm when only use 2.5" drive
- Pull drive to eject design
- Door-less design for easy drive swapping



FOR DUAL 5.25" DRIVE BAY

MB830SP-B

3 x 3.5" SATA/SAS HDD Docking Backplane Cage



- Fits standard 2 x 5.25" drive bay
- Hot-swappable 3 x 3.5" HDD
- Supports SATA III and SAS 3.0 (single channel)
- Pull drive to eject design
- Door-less design for easy drive swapping



FOR INTERNAL 2.5" DRIVE BAY

MB703M2P-B

1 x M.2 SATA SSD Converter Adapter



- Fits standard 2.5" drive bay
- Hot-swappable 1 x M.2 SATA SSD
- Supports SATA III
- Fits 2230/2242/2260/2280 M.2 SSD
- Tool-less M.2 drive installation
- Same dimension as standard 2.5" SSD



MB705M2P-B

1 x M.2 NVMe PCIe SSD Converter Adapter



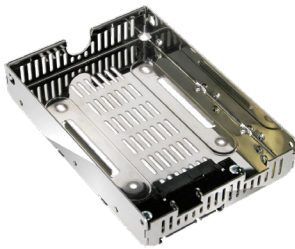
- Fits standard 2.5" drive bay
- Hot-pluggable 1 x M.2 NVMe PCIe SSD
- Supports up to 64Gbps transfer speed
- Fits 2230/2242/2260/2280 M.2 SSD
- Tool-less M.2 drive installation
- Same dimension as standard 2.5" U.2 SSD



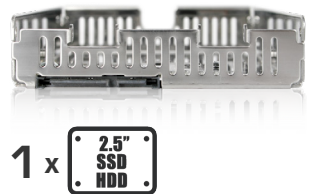
FOR INTERNAL 3.5" DRIVE BAY

MB482SP-3B

1 x 2.5" SATA/SAS HDD/SSD Converter Adapter



- Fits standard 3.5" drive bay
- Hot-swappable 1 x 2.5" HDD/SSD
- Supports SATA III and SAS 3.0 (single channel)
- Fits 5-15mm drive height
- Same dimension as standard 3.5" HDD
- Rugged full metal construction

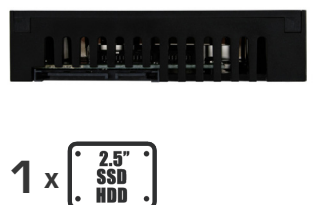


MB882SP-1S-1B

1 x 2.5" SATA/SAS HDD/SSD Converter Adapter



- Fits standard 3.5" drive bay
- Hot-swappable 1 x 2.5" HDD/SSD
- Supports SATA III and SAS 3.0 (single channel)
- Fits 5-12.5mm drive height
- Tool-less 2.5" drive installation
- Same dimension as standard 3.5" HDD
- Easily secure drive w/ self-adjusting mechanism



MB882SP-1S-2B

1 x 2.5" SATA/SAS HDD/SSD Converter Adapter



- Fits standard 3.5" drive bay
- Hot-swappable 1 x 2.5" HDD/SSD
- Supports SATA III and SAS 3.0 (single channel)
- Fits 5-12.5mm drive height
- Tool-less 2.5" drive installation
- Same dimension as standard 3.5" HDD



MB882SP-1S-3B

1 x 2.5" SATA/SAS HDD/SSD Converter Adapter



(HDD not included)

- Fits standard 3.5" drive bay
- Hot-swappable 1 x 2.5" HDD/SSD
- Supports SATA III and SAS 3.0 (single channel)
- Fits 5-15mm drive height
- Tool-less 2.5" drive installation
- Same dimension as standard 3.5" HDD



MB982SP-1S

1 x 2.5" SATA/SAS HDD/SSD Converter Adapter



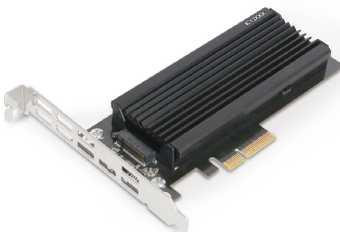
- Fits standard 3.5" drive bay
- Hot-swappable 1 x 2.5" HDD/SSD
- Supports SATA III and SAS 3.0 (single channel)
- Fits 5-15mm drive height
- Tool-less 2.5" drive installation
- Same dimension as standard 3.5" HDD
- Rugged full metal construction



PCIe EXPANSION SLOT ENCLOSURES

MB987M2P-1B

1 x M.2 NVMe SSD to PCIe 4.0 x4 Adapter with Heat Sink & PCIe Bracket



- Fits standard PCIe 4.0 x4/x8/x16 slot
- Support 1 x M.2 NVMe PCIe SSD
- Support up to 64Gbps transfer speed
- Fits 2230/2242/2260/2280/22110 M.2 SSD
- Tool-less M.2 drive installation
- Integrated heat sink and ample ventilation for excellent passive cooling



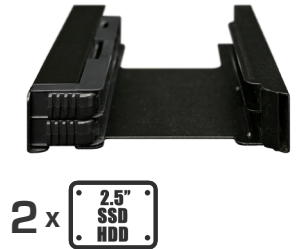
FOR 3.5" DRIVE BAY

MB082SP

2 x 2.5" HDD/SSD Mounting Bracket



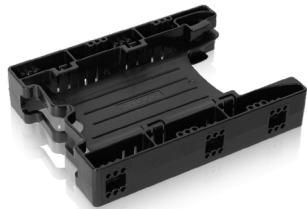
- Fits standard 3.5" drive bay
- Removable 2 x 2.5" HDD/SSD
- Fits 5-9.5mm drive height
- Tool-less 2.5" drive installation
- Rugged full metal construction



2 x 2.5" SSD HDD

MB290SP-B

2 x 2.5" HDD/SSD Mounting Bracket



- Fits standard 3.5" drive bay
- Removable 2 x 2.5" HDD/SSD
- Fits 5-9.5mm drive height
- Tool-less 2.5" drive installation
- 60 screw holes provide max flexibility of installation



2 x 2.5" SSD HDD

MB610SP

3 x 2.5" HDD/SSD Mounting Bracket



- Fits standard 3.5" drive bay
- Removable 3 x 2.5" HDD/SSD
- Fits 5-15mm drive height
- Tool-less 2.5" drive installation
- High-density drive design
- 60 screw holes provide max flexibility of installation



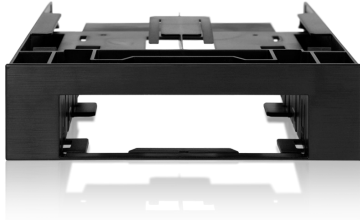
3 x 2.5" SSD HDD



FOR 5.25" DRIVE BAY

MB343SP

2 x 2.5" HDD/SSD & 1 x 3.5" HDD Mounting Bracket



- Fits standard 5.25" drive bay
- Removable 2 x 2.5" HDD/SSD
- 1 x 3.5" HDD/device slot
- Fits 2.5" drives up to 5-9.5mm height
- Tool-less 2.5" drive installation



MB343SPO

1 x 3.5" HDD/Device & Ultra Slim ODD Mounting Bracket

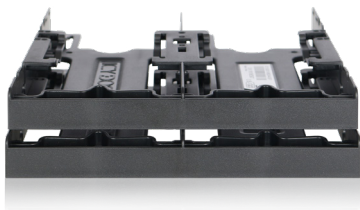


- Fits standard 5.25" drive bay
- 1 x Ultra Slim ODD Slot (9.5mm height)
- 1 x 3.5" HDD/device slot



MB344SP

4 x 2.5" HDD/SSD Mounting Bracket



- Fits standard 5.25" drive bay
- Removable 4 x 2.5" HDD/SSD
- Fits 5-9.5mm drive height
- Tool-less 2.5" drive installation

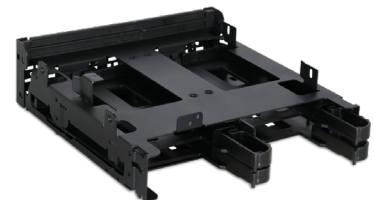


MB344SPO

4 x 2.5" HDD/SSD + (Ultra) Slim ODD Mounting Bracket



- Fits standard 5.25" drive bay
- Removable 4 x 2.5" HDD/SSD
- Fits 5-9.5mm drive height
- 1 x (Ultra) Slim ODD slot (12.7/9.5mm height)
- Tool-less 2.5" drive installation



EXTERNAL M.2 SSD ENCLOSURE

MB861U31-1M2B

1 x M.2 NVMe PCIe HDD/SSD USB 3.2 Gen2 External Enclosure



(USB 3.2 Gen2)

- Supports 1 x M.2 NVMe PCIe SSD
- Supports USB 3.2 Gen2 interface (up to 10Gbps transfer speed)
- Fits 2230/2242/2260/2280/22110 M.2 SSD
- Tool-less 2.5" drive installation



1 x **M.2 SSD**

EXTERNAL U.2 SSD ENCLOSURE

MB931U-1VB R1

1 x 2.5" U.2 NVMe SSD to USB 3.2 Gen2 Adapter



(USB 3.2 Gen2)

- Supports 1 x U.2 NVMe SSD
- Supports USB 3.2 Gen2 interface (up to 10Gbps transfer speed)
- Fits 7-15mm drive height
- Tool-less U.2 drive installation
- Large slide-switch on/off drive power button
- Thunderbolt 4 compatible
- Compatible with U.2 SSD trays



1 x **U.2 SSD**



EXTERNAL 2.5"/M.2 SSD ENCLOSURE

MB104U-1SMB

1 x 2.5" SATA HDD/SSD & M.2 SATA/NVMe SSD to USB 3.2 Gen2 Adapter



(USB 3.2 Gen2)

- Supports 1 x 2.5"/M.2 SATA SSD or M.2 NVMe SSD
- Supports USB 3.2 Gen2 interface (up to 10Gbps transfer speed)
- Fits 2.5" drive up to 15mm height
- Fits 2230/2242/2260/2280/22110 M.2 SSD
- Tool-less 2.5"/M.2 drive installation



MB031U-1SMB

1 x 2.5"/M.2 SATA SSD to USB 3.2 Gen1 Adapter



(USB 3.2 Gen1)

- Supports 1 x 2.5"/M.2 SATA SSD
- Supports USB 3.2 Gen1 interface (up to 5Gbps transfer speed)
- Fits 2.5" drive up to 15mm height
- Fits 2230/2242/2260/2280/22110 M.2 SSD
- Tool-less 2.5"/M.2 drive installation
- Large slide-switch on/off drive power button



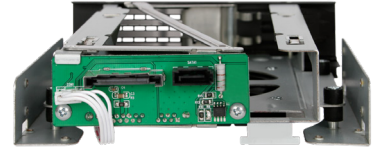
FOR 5.25" DRIVE BAY

MB171SP-1B

3.5" SATA/SAS HDD/SSD Backplane Cage



- Fits standard 5.25" drive bay
- Hot-swappable 1 x 3.5" HDD
- Supports SATA III/SAS 3.0 (single channel)
- Tray-less design for easy drive swapping
- Rugged full metal construction



1 x **3.5" HDD**

MB876SK-B

2.5"/3.5" SATA/SAS HDD/SSD Backplane Cage



Drive Tray # MB453TRAY-2B

- Fits standard 5.25" drive bay
- Hot-swappable 2.5"/3.5" HDD/SSD
- Supports SATA III and SAS 2.0 (single channel)
- Fits 2.5" drives up to 5-15mm height
- Full aluminum body construction
- Safeguard 2-segment key lock system



1 x **2.5" SSD HDD** / 1 x **3.5" HDD**

MB971SP-B

2.5" + 3.5" SATA HDD/SSD Docking Backplane Cage



- Fits standard 5.25" drive bay
- Hot-swappable 2.5" + 3.5" HDD/SSD
- Supports SATA III
- Fits 2.5" drives up to 9.5mm height
- Supports full height 15mm when only use 2.5" drive
- Eject design to pull drive
- Door-less design for easy drive swapping



1 x **2.5" SSD HDD** + 1 x **3.5" HDD**

FOR DUAL 5.25" DRIVE BAYS

MB153SP-B

3 x 2.5"/3.5" SATA/SAS HDD/SSD Backplane Cage



Drive Tray # MB453TRAY-2B

- Fits standard 2 x 5.25" drive bay
- Hot-swappable 3 x 2.5"/3.5" HDD/SSD
- Supports SATA III and SAS 3.0 (single channel)
- Fits 2.5" drive up to 5-15mm height
- 80mm cooling fan with full metal body
- Removable tray design for internal drive security



3 x  / 3 x 

MB901SPR-B R1

2 x 2.5"/3.5" SATA/SAS HDD/SSD Backplane Cage with RAID 1 & JBOD



Drive Tray # MB453TRAY-2B

- Fits standard 2 x 5.25" drive bay
- Hot-swappable 2 x 2.5"/3.5" HDD/SSD
- Supports SATA III
- Fits 2.5" drive up to 5-15mm height
- Built-in hardware RAID 1 & JBOD



2 x  / 2 x 

FOR TRIPLE 5.25" DRIVE BAYS

MB155SP-B

5 x 2.5"/3.5" SATA/SAS HDD/SSD Backplane Cage



Drive Tray # MB453TRAY-2B

- Fits standard 3 x 5.25" drive bay
- Hot-swappable 5 x 2.5"/3.5" HDD/SSD
- Supports SATA III/SAS 3.0 (single channel)
- Fits 2.5" drive up to 5-15mm height
- 92mm cooling fan with full metal body
- Removable tray design for internal drive security



5 x  / 5 x 

Interface Cables

Model Number	Product Name	Length
MB206L-B	SlimSAS 8i SFF-8654 to 2x OCuLink 4i SFF-8611 Cable	50cm
MB306L-B	SlimSAS 8i SFF-8654 to 2x SlimSAS 4i SFF-8654 Cable	50cm
MB406L-B	SlimSAS 8i SFF-8654 to 1x SlimSAS 8i SFF-8654 Cable	50cm
MB323L-B	SlimSAS 4i SFF-8654 to 1x SlimSAS 4i SFF-8654 Cable	50cm
MB302L-B	MCIO 8i SFF-TA-1016 to 2x OCuLink 4i SFF-8611 Cable	50cm
MB310L-B	MCIO 8i SFF-TA-1016 to 2x SlimSAS 4i SFF-8654 Cable	50cm
MB410L-B	MCIO 8i SFF-TA-1016 to 1x SlimSAS 8i SFF-8654 Cable	50cm

Compatible Pairings Guide		
Mobile Racks		Cables
MB699VP-B V2 / MB699VP-B V3	4x OCulink 4i	MB206L-B / MB302L-B
MB720MK-B V2 / MB720MK-B V3	4x OCulink 4i	MB206L-B / MB302L-B
MB852M2PO-B	2x OCulink 4i	MB206L-B / MB302L-B
MB872MP-B	3x OCulink 4i	MB206L-B / MB302L-B
MB873MP-B / MB873MP-B V2	8x OCulink 4i	MB206L-B / MB302L-B
MB105VP-B	1x SlimSAS 8i	MB206L-B / MB306L-B / MB406L-B / MB410L-B
MB118VP-B	3x SlimSAS 8i	MB206L-B / MB306L-B / MB406L-B / MB410L-B
MB021VP-B	1x SlimSAS 4i	MB306L-B / MB310L-B / MB323L-B
MB092VK-B	2x SlimSAS 4i	MB306L-B / MB310L-B / MB323L-B
MB833MK-B V2	1x SlimSAS 4i	MB306L-B / MB310L-B / MB323L-B
MB834MK-B V2	2x SlimSAS 4i	MB306L-B / MB310L-B / MB323L-B

High-Speed Add-on Cards

Model Number	Product Name
MB308A	PCIe X16 Gen4 to Dual Port SlimSAS 8i SFF-8654 AIC with Redriver
MB309A	M.2 M-Key PCIe Gen4 to SlimSAS 4i SFF-8654 Adapter with Redriver

Compatible Pairings Guide		
Mobile Racks	Cables	Add-on Cards
MB699VP-B V2 / MB699VP-B V3	MB206L-B	MB308A (2x SlimSAS 8i)
MB720MK-B V2 / MB720MK-B V3		
MB852M2PO-B		
MB873MP-B / MB873MP-B V2		
MB021VP-B	MB306L-B	
MB092VK-B		
MB833MK-B V2		
MB834MK-B V2		
MB105VP-B	MB406L-B	
MB118VP-B		
MB105VP-B	MB306L-B	MB309A (1x SlimSAS 4i)
MB118VP-B		
MB021VP-B	MB323L-B	
MB092VK-B		
MB833MK-B V2		
MB834MK-B V2		

FOR 5.25" DRIVE BAY

CP116

4 x E1.S/M.2 NVMe SSD Backplane Cage



(PCIe 4.0)

- Fits standard 5.25" drive bay
- Hot-pluggable 4 x E1.S/M.2 NVMe SSD
- Support NVMe 64Gbps per channel
- 2 x Slimline SAS (SFF-8654 8i) connector
- Fits 5.9/8.01/9.5/15mm E1.S drive height
- Fits 2230/2242/2260/2280/22110 M.2 SSD
- Rugged full metal construction

SFF-8654 8i Connector



CP121

8 x E1.S/M.2 NVMe SSD Backplane Cage



(PCIe 4.0)

- Fits standard 5.25" drive bay
- Hot-pluggable 8 x E1.S/M.2 NVMe SSD
- Support NVMe 64Gbps per channel
- 4 x Slimline SAS (SFF-8654 8i) connector
- Fits 5.9/8.01mm E1.S drive height
- Fits 2230/2242/2260/2280/22110 M.2 SSD
- Rugged full metal construction

SFF-8654 8i Connector



CP128

4 x 2.5" SATA/SAS/NVMe(U.2/U.3) SSD/HDD UBM Backplane Cage



- Fits standard 5.25" drive bay
- Hot-pluggable 4 x SAS/SATA/U.2/U.3 SSD/HDD
- Support SATA III/SAS 3.0 (single channel)/NVMe 64Gbps per channel
- 2 x Slimline SAS (SFF-8654 8i) connector for NVMe connection
- 1 x Slimline SAS (SFF-8654 4i) connector for SAS/SATA connection
- Fits 5-15mm drive height
- Rugged full metal construction

SFF-8654 8i & 4i Connector



CP128-1

4 x 2.5" SATA/SAS/NVMe U.3 SSD/HDD UBM Backplane Cage



- Fits standard 5.25" drive bay
- Hot-pluggable 4 x SAS/SATA/U.3 SSD/HDD
- Support SATA III/SAS 3.0 (single channel)/NVMe 64Gbps per channel
- 2 x Slimline SAS (SFF-8654 8i) connector
- Fits 5-15mm drive height
- Rugged full metal construction



FOR DUAL 5.25" DRIVE BAY

CP104

8 x U.2/U.3 NVMe SSD Backplane Cage



(PCIe 3.0)

- Fits standard 2 x 5.25" drive bay
- Hot-pluggable 8 x 2.5" U.2/U.3 SSD
- Supports NVMe 64Gbps per channel
- 8 x OCuLink (SFF-8612) connector
- Fits 5-15mm drive height
- Rugged full metal construction



EXTERNAL M.2/U.2 SSD ENCLOSURE

CP130

CFexpress Type B to M.2 NVMe SSD Adapter Converter



(CFexpress Type B)

- Supports 1 x M.2 NVMe PCIe SSD
- Supports CFexpress Type B interface (up to 16Gbps transfer speed)
- Fits 2230/2242/2260/2280/22110 M.2 SSD
- Tool-less M.2 drive installation



FOR PCIE EXPANSION SLOT

CP138

1 x E3.S NVMe SSD to PCIe 5.0 x4 Removable Mobile Rack



(PCIe 5.0)

- Fits standard PCIe 5.0 x4/x8/x16 slot
- Removable 1 x E3.S NVMe PCIe SSD
- Supports up to 128Gbps transfer speed
- Fits 7-15mm drive height
- Rugged full metal construction
- 50mm skeleton cooling fan to cool drive



CP114

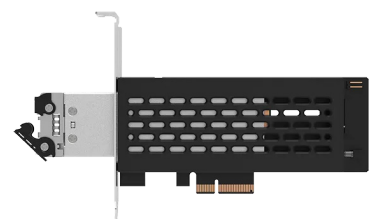
1 x E1.S NVMe SSD to PCIe 4.0 x4 Removable Mobile Rack



(PCIe 4.0)

- Fits standard PCIe 4.0 x4/x8/x16 slot
- Removable 1 x E1.S NVMe PCIe SSD
- Supports up to 64Gbps transfer speed
- Fits 5.9mm drive height
- Tool-less E1.S drive installation

SFF-8654 8i Connector



CP135

2 x E1.S NVMe SSD to PCIe 3.0 x8 RAID Removable Mobile Rack with RAID 0 / 1 / BIG / JBOD



(PCIe 3.0)

- Fits standard PCIe 3.0 x8/x16 slot
- Removable 1 x E1.S NVMe PCIe SSD
- Supports up to 32Gbps transfer speed
- Fits 9.5/15mm drive height
- Rugged full metal construction
- 50mm skeleton cooling fan to cool drive
- Built-in hardware RAID 0 / 1 / BIG / JBOD



FOR PCIE EXPANSION SLOT

CP125

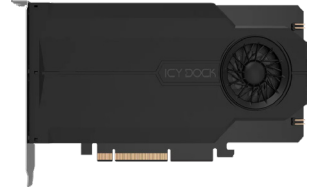
2 x E1.S NVMe SSD to PCIe 5.0 x8 Backplane Mobile Rack with Heat Sink & Fan (PCIe Bifurcation Required)



(PCIe 5.0)

- Fits standard PCIe 5.0 x8 slot
- Removable 2 x E1.S NVMe PCIe SSD
- Supports up to 128Gbps transfer speed
- Fits 9.5mm drive height
- Tool-less E1.S drive installation
- 50mm blower cooling fan to cool drive

SFF-8654 8i Connector



CP074-1

4 x M.2 NVMe SSD to PCIe 4.0 x16 Backplane Mobile Rack with Heat Sink & Fan (PCIe Bifurcation Required)



(PCIe 4.0)

- Fits standard PCIe 4.0 x16 slot
- Removable 4 x M.2 NVMe PCIe SSD
- Supports up to 64Gbps transfer speed
- Fits 2230/2242/2260/2280 M.2 SSD
- Tool-less M.2 drive installation
- 50mm blower cooling fan to cool drive



ICY DOCK®

global.icydock.com

USA

Tel: +1 626-9568800
E-mail: tech@icydock.com
11740 Clark St, Arcadia, CA 91006

TAIWAN

Tel: +886 2-29993251
E-mail: marketing@cremax.com.tw
241新北市三重區重新路5段609巷18號2樓

CHINA

Tel: +86 13670060868
E-mail: service@icydock.net.cn
深圳市宝安区西乡金海路17号金海商务大厦2栋205

GERMANY

Tel: +49 20393151940
E-mail: euinfo@icydock.com
Weidenweg 21H. 47059 Duisburg

FRANCE

Tel: +33 164884264
E-mail: contact@icydock.fr
4, Allée Trait d'Union 77127 Lieusaint

JAPAN

Tel: +81 3-58264155
E-mail: sales@seijinshoji.co.jp
東京都文京区本郷3-19-7本郷三宝ビル6階